


**Application to the World Health Organization,
Collaborating Centre on Community Safety
Promotion for the Designation of
Fong-bin Township, Hualien County,
TAIWAN**

As a Member of the WHO Safe Community Network

January 2005



陳清義 James C. Chen
Medical Vice-Superintendent
Mennonite Christian Hospital



劉永靜 Yong-Jing Liu
Chief Executive of Fong-bin Township
Office



CONTENTS

I. Introduction	4
1.1 Background	4
1.2 Demography	5
1.3 Occupations and Industries	6
1.4 Seriousness of Injury Problems in Fong-bin community	6
1.5 Mennonite Christian Hospital assists with the safe community program -	8
II. Targets	9
2.1 National Targets	9
2.2 Regional Targets	9
2.3 Local Targets	10
III. Projects & Results (as adhered to the six indicators)	11
3.1 Establishment of an inter-sectoral organization for the promotion of the safe community and injury control program	11
3.1.1 Organization Structure	11
3.2 The Age Group Oriented and Specific Environment Oriented Protracted Injury Control and Safety Promotion Programs	15
3.2.1 Child Safety (ages 0-14)	15
3.2.2 Youth Safety (ages 15-24)	17
3.2.3 Adult Safety (ages 25-64)	18
3.2.4 Senior Citizen Safety (ages 65 and above)	18
3.3 Specific environment oriented injury control and safety promotion programs	22
3.3.1 Water Sport Safety (including seacoast and river bank activities) ----	22
3.3.2 Road Safety	24
3.4 The Injury Control Programs for high risk groups and high risk environments	25



3.4.1 High Risk Groups: Fong-bin community members -----	25
3.4.2 The children in the Fong-bin community -----	26
3.4.3 The senior citizens in the Fong-bin community -----	28
3.4.4 Foreign Spouses -----	28
3.4.5 High Risk Terrains -----	29
3.5 Fong-bin Injury Surveillance System -----	30
3.5.1 Emergency medical records & the major causes of death census log	30
3.5.2 Injury surveillance system of the Hualien Hospital in Fong-bin -----	31
3.5.3 School injury logs, farmer and fishermen work related injury logs, and the injury and mortality logs of funeral undertaker -----	31
3.5.4 Data registration and analysis of injuries -----	32
3.5.5 Injury data analysis and report -----	38
3.6 Internal and external evaluation mechanisms -----	38
3.6.1 Internal evaluation -----	38
3.6.2 External evaluation -----	39
3.7 Ongoing Participation in National International Safe Community Network -----	40
IV. Be willing to contribute to strengthening the Network of Safe Communities	42



I. INTRODUCTION

1.1 Background



Fong-Bin Township is located at southeast of Taiwan and its total land area measures at 162.431 square kilometers. The land spans quite long, 47 kilometers from north to south, but narrow. The township comprises of five villages and 14 aboriginal tribes. The elevation ranges from 5 to 924 meters above sea level.

Photo: The east coast national scenic area

The main transportation is by the road primarily. There is no rail road. Hua-Tung Coast Highway 11, passing through Fong-Bin Township from north to south, is the sole route for people to enter and exit the community. It links up directly to



Hualien City in the north, and down to Taitung City in the south. It takes about one hour to drive between Hualien City and Fong-Bin Township.

Highway 11 is the major north-south pathway along Hualien County's coastal area. Because passing through the National East Coast Scenic Special Area, the Highway has become an important route for sightseeing. The entire Highway 11 spans 176 kilometers in length and approximately 6 to 8 meters in width. Generally, the condition of roads is acceptable. However, from Shui-Lien to Pa-Ch'i, because the hillside is unstable, landslides occur quite often and would block the traffic. It also affects the vehicles safety, and makes it very difficult to move around to and fro the community. At the same time, due to the development of tourism, the amount of vehicles on the road has increase quite a lot, accidents are more likely to take place, and thereby the safety for the local residents on foot also gets threaten.

In addition, there is Kuang-Feng Highway, connecting Kuang-Fu Township and Fong-Bin Township, approximately 30 to 40 minutes of driving distance. It is the primary interconnecting road between Hua-Tung Highway and Coastal Highway's north section. Kuang-Feng Highway spans 19.2 kilometers in length, and approximately 7 to 12 meters in width. Part of the mountain area along the route is unstable. Therefore, landslides occur quite often and would block the transportation.



The most special section is Jui-Kang Highway, connecting Jui-Sui Township and Kang-K'ou Village. Jui-Kang Highway is approximately 45 to 50 minutes of driving distance. It crosses the Fong-Bin area, linking up to the Hua-Tung Highway 9. Every summer, whitewater rafting tourists take this route to go back to Jui-Suis. At present, the partial sections that are easy to cause landslides are under improvement work.

1.2 Demographics

The Fong-Bin Township population once reached 14,600 by the end of 1966, which set the township's record high. But along with the vigorous development of industry and commerce, the community's population has flowed out more and more. The current residents are mainly seniors, weak people, women and children. Only during major holidays, e.g. Lunar New Year, Ancestry -Worship & Grave-sweeping Festival, harvest Festival, etc., would most of the traveling people return the motherland. Thereby the community would come to life with celebrations again. Fong-Bin is one of plain area aboriginal townships in Taiwan. Aboriginal people accounts for 80% or so of its population.

Fong-Bin's population hits its record low this year. The number of newcomers registered as legal residents continues to drop. The proportion of seniors is getting higher. The ration of male to female is also not balanced, standing at 56:44 or so. The demographic outlook of the community is surely quite different from the typical communities in Taiwan (see Figure 1).

	2002	2003	2004 (up to March)
Male	3388	3316	3305
Male's Percentage	55%	56%	56%
Female	2750	2623	2620
Female's Percentage	45%	44%	44%
Total	6138	5939	5925
Aborigines	4975	4689	4682
Aborigines' Percentage	81%	79%	79%
0-19	1392	1273	1261
20-49	3016	2936	2933
50-69	1181	1160	1159
70 & above	549	578	572

Figure 1: adapted from Household registration office, Fong-bin Township



1.3 Occupations and Industries

Fong-Bin Township's industry is agriculture and fishery primarily. The majority of farming places are terraced fields. Arable land area measures only 2,760 hectares. Among the arable lands, paddy fields account for 223.5 hectares, and arid lands 643.6 hectares. The rest of the arable land is Forestry land, state-owned wilderness and river land. Therefore, the agricultural development is under serious constrained. Moreover, the development of industry and commerce has caused serious population outflow. The agricultural population decreases year after year. Labor force in agriculture becomes more and more insufficient. The land goes out of cultivation, and the agriculture is bleak.

In recent years, the development of tourism looks pretty promising for the Fong-Bin Township. In the Fong-Bin area, there are many scenic spots, attracting many tourists to well up into. It seemed to bring for the area business opportunity. However, the reality is that tourists tend not to stay overnight because the area's location is very remote and the transportation is quite convenient. Therefore, the business opportunity was limited. Since the opportunities for local jobs remain very limited, most of the working population leave for employments in Hualien City or even big cities or municipals in the western Taiwan.



1.4 Seriousness of Injury Problems in Fong-bin community

Fong-Bin Township is located in Hualien County of eastern Taiwan. In 2003, Hualien County ranked the second place among all counties and municipals in Taiwan, regarding the death rate from injuries (see Table 1). As to the Fong-Bin Township's aborigines, which account for 70% of the Township's entire population, their mortality rate from injury ranks the second place. The ranking is far higher than that of the entire Taiwan area, of which the ranking is the fifth place (see Table 2). From the two sets of information, one can see obviously that injuries are really serious problems in the Fong-



Bin community. In addition, Fong-Bin is a community of population outflow; the majority of the residents are seniors and children, which are both particularly vulnerable to injuries. Therefore, injury control becomes more important.

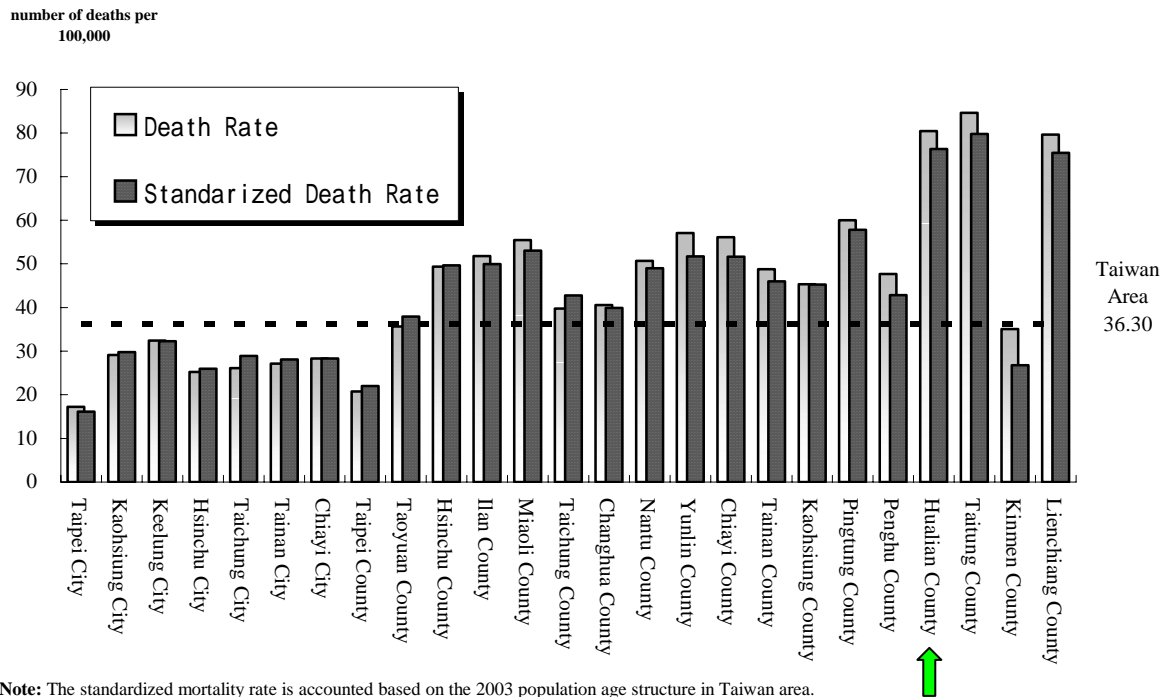


Figure 2 : Comparison of Injury Death Rate among Cities & Counties in Taiwan Area

Table 1: In 2004, 10 leading causes of Death in Taiwan

Rank	Causes of Death	Group Death Rate
1	Cancer	156.01
2	Brain blood vessel disease	54.98
3	Heart Diseases	52.23
4	Diabetes	44.38
5	Injuries	36.30
6	Chronic liver diseases & cirrhosis	22.98
7	Pneumonia	22.60
8	Nephritis, Nephragagia & other kidney syndromes	19.08
9	Suicide	14.16
10	Hypertensive diseases	8.17

Table 2: In 2004, 10 leading causes of death among Aboriginal People in Plain Areas

Rank	Aboriginal People in Plain Areas	
	Cause of Death	Number of Death per hundred thousand
	Total	681.75
1	Cancer	131.59
2	Injuries	92.75
3	Brain blood vessel disease	64.10
4	Heart Diseases	53.90
5	Chronic liver diseases & cirrhosis	41.27
6	Diabetes	38.36
7	Pneumonia	25.74
8	Suicide	15.54
9	Nephritis, Nephragagia & other kidney syndromes	15.05
10	Bronchitis, pulmonary emphysema & asthma	12.62

The Fong-Bin area is backed by mountains and faced by sea. Typhoon and its ensuing mudflow are the most threatening natural disasters. Among them, the most serious damage



ever struck upon the Fong-Bin area is Toraji Typhoon in 2001. On July 30, 2001, Toraji Typhoon blew through Taiwan. The Typhoon left 100 people dead, 114 missing, more than 500 houses damaged, and the property loss reached as high as several hundred million New Taiwan Dollars, in the areas of the middle Taiwan and the Hualian area. After the disastrous storm and heavy rains, the Fong-Bin Township, suffering from the most serious ravage, was cut off with public facilities, such as power, telephone, water supply and so on. All transportations to and from the outside world were completely severed. It was totally left isolated just like an orphan hanging all by itself on the merciless seashore corner. Therefore, the living safety of the Fong-Bin Township's residents is already the urgent demand.

1.5 Mennonite Christian Hospital assists with the safe community promotion program

Mennonite Christian Hospital has been serving the Hualian area for 50 years or so. Even in its early days, when their work was carried out by mobile clinics, to serve the community with medical relief care was regarded as the most important mission. The same spirits remains till the present. Whenever they got any opportunity to promote injury control for the community, they won't miss it for sure. In August 2002, Mennonite Christian Hospital started to undertake the Fong-Bin safe community promotion plan. By the end of the same year, the Fong-Bin Safe Community Promotion Center was set up.

Not only did the safe community's plan bring for the Fong-Bin community with different public health resources, but also empower the community to improve the injury control. At the same time, it helped effectively foster mutual understanding among the community's residents. The minority or underprivileged groups also got more attention and care. It meant a lot for a community like Fong-Bin, where the population outflow problem hit very hard. Besides, if Fong-Bin Township effectively reduces injuries via safe community's undertakings, it would establish itself as model for the development of safe communities in Taiwan's east coast. It would help enhancing the community's status as well as upgrading its tourism industry.



II. TARGETS

2.1 National Targets

Accidental injury used to be the third leading cause of death in Taiwan. Since we passed the law to mandate motorcycle riders to wear helmets, the number of injury deaths has decreased dramatically. By the year of 2003, accidental injury has dropped to the fifth cause of death. However promising results by and large came from communities where local governments and organizations put a lot of efforts to educate people and to enforce the compulsory regulations. Thus, the community involvement in carrying out injury prevention and safety promotion policies is definitely necessary.

At present, among all causes of injuries, motor vehicle accidents still cause the most deaths and hospitalization. Nonetheless, other causes of injury such as falls, cutting/piercing... also account for great portion of life lost and medical expenses but have not obtained enough attention yet. On the other hand, suicide and violence injuries had on the rise in recent years. At present, they are already on the list of top ten causes of death. Therefore, prevention against both unintentional and intentional injuries has become the national urgent task.

Learning from both the domestic and international experiences, we realized that the development of safe community is the best approach to injury prevention and safety promotion. Therefore, in 2002, we selected four communities of different types around Taiwan, and launched four individual safe community promotion programs. These four communities can set examples to other communities. Our goal is not only to reduce accidental and intentional injuries, through Safe Community Development, but also to build a safe culture, whereof “safety” becomes the most basic claim in life, the most important element in work, and the most indispensable condition in leisure.

2.2 Regional Targets

Low population concentration and limited resources are the common characteristics in the Taiwan eastern area. Hualien County and Taitung stand as the first two places among Taiwan’s accident injury mortality ranking. The fact attests the necessity and urgency of conducting injury control in this part of Taiwan. While the Mennonite Christian Hospital



promoting the Fong-Bin Safe Community Plan, they also hope to make some contribution to improve injury control for the entire east part of Taiwan. Hence, in 2003, they held Eastern Taiwan Traffic Injury Control Conference. Moreover, in the eastern area, there are a lot of high mountains. In order to promote mountain-climbing safety, they also held one seminar on high mountain medical services. In order to carry on more injury prevention, they plan to establish the Hualien Regional Safe Community Association, in the hope that they could facilitate more communities in the eastern area of Taiwan to practice safe community works. Furthermore, they could work together with the communities as to further reducing the injury occurrence rate and the mortality rate in the entire eastern area of Taiwan.

In addition, Hualien County government's subordinate units have their specific plans and goals regarding safety promotion. Among them, the most outstanding example is the Hualien Department of Health's involvement in the establishment of the countywide Emergency Rescue Network. Because the Hualien County is very long but narrow, whenever any serious accident occurs, rescues just could not respond as fast as necessary. Consequently, survival rate reduced largely. However, with the Hualien County Department of Health's efforts, large amount of rescue personnel have received before-hospital rescue training. In addition, they had established the air rescue system, and large-scale rescue training programs.

2.3 Local Targets

As the Fong-Bin Safe Community Plan is concerned, the ultimate goal is to help the residents live more safely. Therefore, what really matters is to reduce injuries. First, is to conduct comprehensive information collection and regular analysis of accident injuries. Secondly, is to maintain the Fong-Bin Safe Community Promotion Center' everyday operation, then carries out improvement programs targeting the injury high-risk groups and environments. The Fong-Bin Township hopes to become a safe community and to be able to share their experiences with other communities. Therefore, after achieving the goal as designated member of the WHO Safe Community Network, it would continue to carry on the community's experiences to share with and transfer to other national as well as international communities.



III. PROJECTS & RESULTS (AS ADHERED TO THE SIX INDICATORS)

3.1 Establishment of an inter-sectoral organization for the promotion of the safe community and injury control program

The construction of an enduring organization is the first step of the safe community work. Although Fong-bin Community lacks the human resource for safety promotion and injury control operations, its organizational restructuring and the assistance provided by the academic sector and government establishments had enabled the Fong-bin Center for Safety Promotion (FCSP) to efficiently promote the realization of the different safe community criteria.

3.1.1 Organization Structure

Fong-bin Center for Safety Promotion (FCSP) was organized in the year-end of 2002. The local popular representative acts as the chairperson of the FCSP and community members take on the committee membership seats. Fong-bin Community is a small community, hence, as much as possible, the entire FCSP organization is made in flat structure. It is mainly composed of three sub-committees. Unfortunately, community operations encountered some problems later, mainly due to the small participation it received from the government sector. This problem had made it impossible to effectively implement the various meeting resolution and promotion efforts of the committee. Despite this difficulty, the committee continued to hold a pioneering significance for the Fong-bin safe community program and was able to achieve some of the early objectives of the safe community endeavors.

The FCSP underwent an organizational restructuring in the year-end of 2003 to ensure the effective implementation of the Fong-bin safe community projects. The restructuring not only placed all the Fong-bin Community government service departments under the umbrella of the FCSP, but also invited experts from the academic sectors and prominent local authorities to hold consultancy positions.



An FCSP Council was organized for the new Fong-bin Center for Safety Promotion. The FCSP Council membership was composed of representatives appointed by the sponsor organization and the five committee members of the Fong-bin safe community service volunteer team, who automatically became natural committee members. The committee members elected a committee chairperson and two vice chairpersons. During its regular monthly committee meeting, the department reported their respective injury statistical analysis data to the committee, as well as deliberated and resolved safety promotion project proposals and other safe community related matters.



Committee meetings were attended by Director of Fongbin Township and Chair of Fongbin Center for Safety Promotion, members of four committees, Director of Medical Policy Department, Mennonite Christian Hospital, and volunteer team members.

The authority directly under the Fong-bin Center for Safety Promotion is the “Fong-bin safe community service volunteer team”. The volunteer team was organized in 2002; at present, it has a membership of over fifty volunteers. The volunteer team members elect the team’s five committee members; moreover, the volunteers having the highest and second highest voices during the election are automatically appointed as the team leader and deputy team leader. The volunteer team has five task forces; namely, the Administration Committee, the Traffic and Tourist Safety Committee, the Child and Youth Safety Committee, the Occupational Safety Committee, and the Research, Training and Promotion Committee. Each volunteer team committee member acts as the chairperson of each task force as well as the natural members of the Action Committee, since the chairpersons of these five task forces automatically become the members of the Action Committee organized under the volunteer team. The Action Committee does not have a set regular meeting schedule, since meetings only become necessary after the FCSP Council has finalized work assignments; thereafter the relevant departments or teams would hold their respective meetings to plan and discuss their appointed tasks or projects.



The establishment of Fongbin Volunteer Team which comprised of local residents.

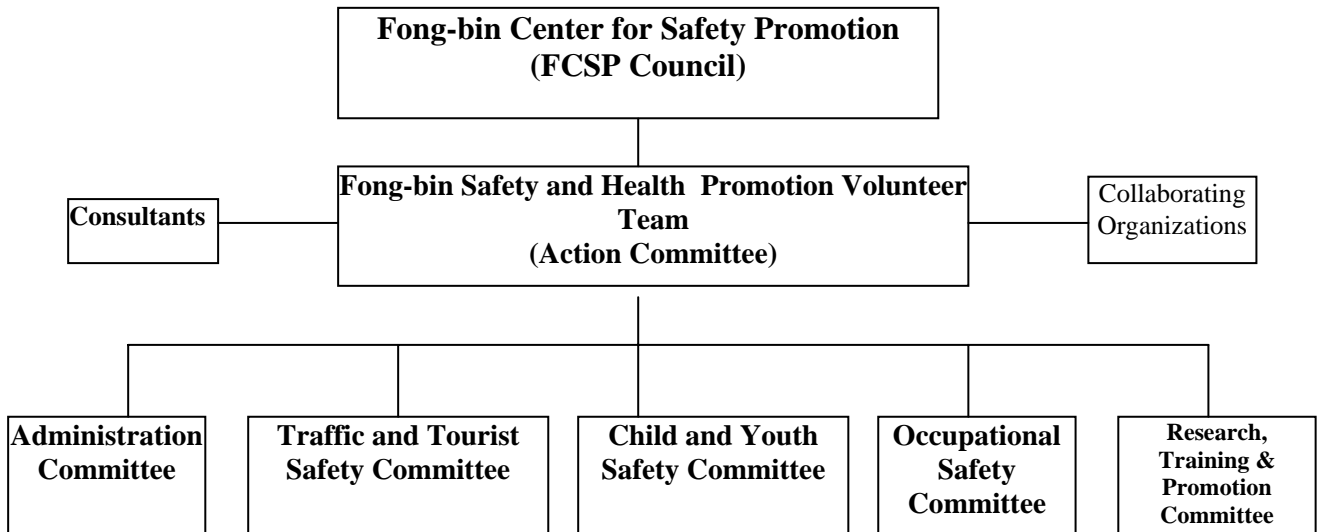


In the first quarter of 2004, the operations of FCSP have been very normal and smooth; however, since Fong-bin Community is a small community, records of injuries had been relatively less. Unfortunately, it has a vast territory; hence program implementation work had taken up more time. For this purpose, FCSP Council changed its regular monthly meeting into a quarterly meeting; in the event of matters requiring council resolution during the meeting interim period, emergency meetings are called upon the discretion of the council chairperson.



Fong-bin Community Safe Community Promotion Team

Organization Chart



Committee	Functions
FCSP Committee	Resolves the various safety promotion work implementation procedures for FCSP implementation.
Administration Committee	Assists the FCSP in handling administrative matters and the FCSP liaison window
Traffic and Tourist Safety Committee	Implements all traffic and tourist safety related programs
Child, Youth and Home Safety Committee	Handles all child safety and home safety promotion related work
Occupational and Senior Citizen Safety Committee	Handles all the farm and fishery safety promotion work and senior citizen safety promotion work in the Fong-bin area.
Research, Training and Promotion Committee	Handles all safety promotion and safety education, as well as publishing related matters

Collaborating organizations	Type of collaboration
Fong-bin community administration office	Coordination of public administration work with FCSP operations and endeavors
Fong-bin Health Office	Assists in implementing infant and schoolchildren safety promotion work
DOH Hualien Hospital in Fong-bin	Handles the recording of all injury data
East Coast National Scenic Area Administration	Assists in the promotion of tourist safety related matters
Kuang-Fong Farmers Association	Assists in the promotion of farmer safety promotion programs
Mennonite Christian Hospital	Provides guidance and counseling on Fong-bin Center for Safety Promotion operations related matters
Mennonite Social Welfare Foundation	Assists in the promotion of the "Protection Linking Project"



3.2 The Age Group Oriented and Specific Environment Oriented Protracted Injury Control and Safety Promotion Programs

The most feature of the safe community is its high regard for the needs of each age group. Needs are classified based on age group instead of ethnic group; thus, despite the relatively smaller Fong-bin population, injury data collection and community meetings and discussions revealed that each age group had specific and varying safety requirements. For this purpose, the FCSP created and carefully implemented the pertaining safety plans.

3.2.1 Child Safety (ages 0-14)

In the matter of child safety, the safety program was promoted on both school and home levels. The school level promotion plan established an injury recording mechanism in each school to understand the particular schoolchildren injury statistics of each school. Furthermore, the FCSP also conducted a campus environment safety evaluation and proposed improvement suggestions for the environmental safety of each school. The FCSP also instilled the safety consciousness into the educational activities and programs of each day care center and school. In the home level promotion plan was realized in line with the home safety products promotion efforts of the health department. The program aimed to urge parents to make sure that products used in the home are child safe.

➤ Day Care Center Safety Education

In Fong-bin community, there is a very common sight to see the older generation take care of their grandchildren. Consequently, pre-school children seldom receive the right safety common sense education at the home; this makes the day care center



the best venue for safety education dissemination. The most common self-inflicted



injury among pre-school children in Fong-bin is burns, and worse, it could easily lead to more serious injuries. Hence, we taught burn safety education to all children in every day care center in Fong-bin. Furthermore, we employed animated and lively multimedia teaching aids to help the children understand the dreadful and dangerous nature of fire through drawings. This type of safety education received excellent feedback from the children, and at the same time achieved the best teaching results. At present, the FCSP is in the process of creating the relevant textbooks for the future safety education promotion work to be conducted in day care centers.

➤ **Promotion of Home Safety Product**



The Fong-bin community administration office promoted the use of home safety products in Fong-bin community this year. Together with the local health department, the FCSP promoted the usage of safety products in its numerous activities and campaigns. These home safety products provide



Set up a special area for safety materials in the local library.

some simple material changes to home implements or furniture that often cause injuries among children; thus making the home environment a safe enough environment for children. At the same time, FCSP also gives out complimentary safety products to Fong-bin residents during these promotional campaigns, thus giving the community residents a chance to try their hand at the do-it-yourself home improvement products.

This program won excellent public response.

➤ **School Campus Safety Evaluation**

Children from ages 7 to 14 years spend a good part of their time at school. In order to upgrade the safety of schoolchildren in the school campus, the FCSP





inspected the environmental conditions of the five schools in Fong-bin using the criteria of the Jing Chuan Child Safety Foundation school environment safety checklist. The FCSP also proposed some environment safety improvement suggestions to these schools.



➤ **Infant and Pre-school Children Safety Promotion and Education**

Infants and pre-school children do not have behavioral or determination capacity, hence a slight oversight of the parents could easily end up in incidents and injuries. In order to provide parents with a better understanding of the safety needs of their infants and pre-school children, parents who brought their children to the Health Office for their immunity vaccines also receive some health education reminders and a home safety checklist from the public health nurse. The campaign brought down the infant and pre-school injury statistics of Fong-bin.

3.2.2 Youth Safety (ages 15-24)

Since Fong-bin community does not have a senior high school or university, young people between the ages of 15 to 24 continue their education either in Hualien City or in the western part of Taiwan. This is also the main reason behind the smaller youth population ratio currently residing in Fong-bin. However, these young people do return home during the school summer and winter breaks, thus it is also imperative that the FCSP attend to youth safety matters.

➤ **Holiday Road Safety Project**

Young people usually return to Fong-bin community during the annual summer and winter breaks; consequently, traffic violations from juvenile motorcycle riders are more serious during these periods. Hence, the Fong-bin Police department would strengthen road safety promotion work and traffic violation crackdown efforts during these break periods. Moreover, the FCSP hopes to improve the safety conditions of the accident prone road sections in Fong-bin, as pointed out by the Road Safety Committee; at present, road signs have been installed to improve the



safety of these road conditions.

3.2.3 Adult Safety (ages 25-64)

The worker population comprises a good size of the Fong-bin adult population; hence injuries in this age group are mostly road and occupational accident related injuries. Since the adults also attend to most of the work in the community, the enhancement of their safety awareness level has also become a very important task.

➤ **Farm Safety**

Farming is the main source of livelihood in Fong-bin, and a huge slice of the livelihood producers belong to the adult population. In an effort to improve the occupational safety in farms, the FCSP invited the Mennonite Christian Hospital emergency room doctors to teach safe pesticide usage and snakebite first aid measures to local farmers. The promotion program provided many Fong-bin farmers with their first acquaintance with the safety information they found very helpful in their work. Moreover, the FCSP also distributed some snakebite first aid kits to farmers to provide them with a life safeguard when working on the mountain slopes.



Snake-bite Prevention DM

3.2.4 Senior Citizen Safety (ages 65 and above)

Population drain has given Fong-bin a very high senior citizen population ratio and, at the same time, a high ratio of solitary senior citizens requiring care and attention. Hence, the community needs to work harder in the matter of senior citizen safety. From the high fall related injury statistics of the Fong-bin senior citizens, senior citizen safety has become the most pressing and most important task in the Fong-bin safe community program; likewise, more resources have to be invested in this aspect.



➤ **Home Visit**

Fong-bin community administration office assigns appointed personnel to visit the homes of solitary senior citizens and senior citizens suffering special conditions. In an effort to upgrade the safety of senior citizen homes, the FCSP also requested the secretary general to accompany the community administration office representatives during their house calls, evaluate the safety conditions of the visited home environments, as well as propose suggestions for improvements. The move was aimed to help mitigate the occurrence of home injuries. On some occasions, the volunteer workers themselves attend to the improvement of the more visible danger spots in the households.



➤ **Bathroom safety inspection and improvement program**

During the evaluation of the injury records, we found out that the most common place of injury of many senior citizens is the bathroom. Hence, the FCSP conducted a survey on the bathroom environment of senior citizen homes. The survey found that the bathrooms in majority of the senior citizen homes do not have slip prevention safeguards, thus the FCSP is currently assisting senior citizens improve their bathroom facilities and environment. Due to resource limitation, available





safety improvements were first installed into the bathrooms of solitary senior citizens, as they are the common victims of tripping or fall injuries. The FCSP shall continue to seek budget allocation for the program and see to the home improvement of senior citizens requiring assistance.



Before safety handle installed

After installed

➤ **Protection Linking Project**

The outward drain of the Fong-bin youth population has made it necessary to see to and help provide for the home safety of senior citizens. The Protection Linking Project of the Mennonite Social Welfare Foundation Hualien adequately caters to the Fong-bin Community



requirements. After initial discussions with the Mennonite Social Welfare Foundation, the FCSP gradually implemented an evaluation survey of the senior citizen residents in Fong-bin. The evaluation helped the FCSP understand the status of solitary senior citizens, senior citizens about to live alone, senior citizens with physical disabilities or with high risk illness conditions. Having understood their individual inclinations, a report was handed over to the Mennonite Social Welfare Foundation social workers for further evaluation. Thereafter, free Protection Linking Project systems were installed into the homes of senior citizens eligible under the Mennonite Social Welfare Foundation standards. This benefit became a very welcome assistance to many low-income Fong-bin senior citizens. We believe that the presence of this service system could substantially upgrade the safety and quality of life of Fong-bin senior citizens.



➤ **An Introduction to the Protection Linking Project**



Full-time Staff in the Center



Home terminal unit installed and linked to the landline phone in the house of people in need.

Background	Social changes and changes in the living environment brought about a change in the Taiwanese family unit. Hualien County ranks among the top four counties (cities) in terms of senior citizen population. Lack of employment opportunities had driven most of the youth population to greener pastures; as a result, the home care of senior citizens gradually became a social problem requiring serious attention.
Objectives	It is to establish a 24-hour emergency call service and health information support network for the home and care providers of solitary senior citizens or persons with disabilities living in Hualien.
Service beneficiaries	Scope of the FCSP services range from high risk groups (such as persons with cardiac diseases, hypertension, asthma, diabetes, mobility difficulties, chronic diseases during their home convalescence period) to solitary senior citizens, women and children. At present, services mainly cater to middle-to-low income families and low-income families. FCSP is also accepting service applications from the general public.
Description of services	Reporting of accident injuries and emergency medical cases; Ambulance transportation and emergency contact notification; Telephone health inquiries and concern calls; Social resource problem information and transfer assistance; Regular home visitations; Outpatient clinic appointment assistance.
Operating procedure	A home terminal unit is installed at the residence of the individual. Unit is linked to the landline phone that enables the individual to transmit signals to the center. The center then evaluates the individual's condition and contacts the related contact person or hospital.
Process of organization	The LIFELINE system currently being used is a US-developed product that had been established and used in the US for around 20 to 30 years now. The system originally belonged to the Mennonite Christian Hospital. It was imported from the US in September 1997. A center was established in the emergency room of the hospital. It provided 24-hour care and protection services to the solitary senior citizens and persons with disabilities living in the Hualien area. The Mennonite Foundation moved to its new home at the Hualien County Disability Welfare Service Center in July 1998, and in September 1998, it transferred the base of the Emergency Operation Center from the Mennonite Christian Hospital emergency room to the Mennonite Foundation center.
Staff	Three nurses on rotation duty shifts attend to services. A nurse accompanies the social worker during home visitation calls and processing of problem cases.



3.3 Specific environment oriented injury control and safety promotion programs

Fong-bin Community is rich in natural scenic resources and land terrain; hence it has become imperative to establish specific safety promotion work for each particular type of environment.

3.3.1 Water Sport Safety (including seacoast and river bank activities)

➤ Xiuguluan River Rafting

The safety work involved in the *Xiuguluan* River rafting activities have shown visible improvement under the efforts of the East Coast National Scenic Area Administration (ECNSAA) and the local business sector. At present, the ECNSAA river rafting safety operations covered the following aspects: water volume surveillance, waterway cleaning, and improvement of risky river segments. The business sector also had the spontaneity of upgrading safety measures, such as the usage of good quality life vests and safety helmets, assisting in the removal of hazardous objects in the waterway, etc. The center planned to ask the business sector assist in logging injury incidents. Moreover, locations and factors frequently causing accidents and injuries are to be improved in the hope of upgrading the safety of river rafting activities.



Visitors have to watch safety guidance video before doing water rafting.



➤ **Water sport safety education and swimming training lessons**

There are no swimming pools in the Fong-bin area; as a result, Fong-bin schoolchildren have long been deprived of formal swimming lessons and training. Under a joint program with the Jici Beach, the FCSP employed licensed lifeguard swimming instructors to teach elementary schoolchildren with the proper water sport safety concepts and swimming techniques.



➤ **Water sport safety consciousness promotion**

There are numerous water sport activities a person may engage in Fong-bin; such as fishing, bamboo rafting, etc. Hence, the FCSP held a water sport competition in the hope of promoting the right water sport safety concepts through such animated water sport competition. Furthermore, the promotion of these safety concepts also saw to the continuity of the local culture and tradition.





➤ **Spots of Shitiping and Jici beaches**

At present, life saving equipment has been installed in the seaside bathing areas of Shitiping and Jici beach, and regular inspections are conducted to check on equipment status. Moreover, warning signs have been posted on danger zones to warn tourists.



Visitors fish along the seashores.



Installed more life tubes along seashores; added police patrol check boxes.

3.3.2 Road Safety

➤ **Improvement of the Road Lighting Facilities**

Many of the streets or roads in the vast territory of Fong-bin *Community* are not equipped with streetlights. In the numerous FCSP meetings held, council members presented several proposals for the improvement of the street lighting facilities of certain road sections. After the establishment of a meeting resolution, the *Community* administration office started to maintain and improve street lighting facilities. In the future, the FCSP shall compare traffic accident related injury statistics to evaluate the requirements of other road sections.

➤ **Improvement of the Road Signs**

40 kilometers of the Taiwan Provincial Highway #11 passes through the Fong-bin area. Perhaps it is due to the problem that many of the road sections are winding, or that road signs are inadequate and poorly designed that traffic accidents frequently



occur in these sections. After the compilation of injury related information, the FCSP had presented a report on this matter at the Road Safety Committee Meeting. Thereafter, immediate responses have been gathered and compiled; road signs have been increased in some road sections.

3.4 The Injury Control Programs for high risk groups and high risk environments

3.4.1 High Risk Groups: Fong-bin community members

The remote location of Fong-bin community had often made it difficult for the emergency search and rescue resources to reach Fong-bin at the first hour. Hence, whenever a community resident encounters an accident-related injury, the injury could easily tend to be more serious. Moreover, the residents of the entire Fong-bin community live in a community that is seriously short of medical resources; as a result, natural calamities occurring during the arrival of the typhoon season each year often posed a more serious threat to the safety of the residents.

➤ CPR First Aid Training

Fong-bin community has a narrow, elongated terrain, and many of the residences and farms are located deep into the mountain. Urgent medical assistance to injuries are often late in coming as the Fong-bin villages search and rescue efforts often could not be delivered at the vital first hour. Hence, in an effort to upgrade the first-hour survival rate of community members, the FCSP conducted several CPR teaching programs at the various villages in Fong-bin. During the two-month period of July and August 2003, we were able





to train and issue CPR licenses to 120 Fong-bin residents, and through this first aid education and training campaign, instill the idea of a safe community into the awareness of the people. Another very important aspect of this program was our ability to train local volunteer workers during this first aid education and training campaign. They acted as the assistant instructors during the CPR training classes. The campaign hoped that to enhance the future first aid teaching skills in the Fong-bin area and, at the same time, hold follow-up training programs to ensure the sustained improvement of their first aid skills.

➤ **Flood Control Drills**

The summer season is also the typhoon season. In the past, whenever a typhoon hits Fong-bin, a disaster is often produced. Hence, near the beginning of each summer, the FCSP together with the local fire substation would conduct flood control drills with the local adult male residents. These drills were aimed to teach local residents the right action measures to take at the event of a typhoon, thus mitigating the loss of life and property in the area during these natural calamities.

3.4.2 The children in the Fong-bin community

Fong-bin community suffers from a population drain, hence compared to a normal Taiwan community, it has a relatively high child and senior citizen population. Hence, it is a common sight to see senior citizens taking care of or bringing up their grandchildren. Unfortunately, this meant that children relatively seldom receive the right safety common sense education at the home. Moreover, after school, children are often found playing beside the road or some other high risk environments; thus injuries among children had become a common occurrence in Fong-bin.

➤ **After school guidance and assistance plan**

Since child rearing in many of the families in Fong-bin *Community* are in the hands of the older generation, children are often left alone at home after school; as a result, they are free to run and play at the road sides and other high risk areas. In an effort to improve this problem, the safe community volunteer team



and the World Vision Taiwan jointly conducted some after school guidance activities at Chingpu Village. Concerned teachers from the Chingpu Public Elementary School and volunteer workers in Chingpu would accompany students after school and help them with their homework and lessons. The program not only reduced the chances of children playing unattended and the subsequent injuries from such problem, but also killed a bird with two stones as it allowed the impartment of safety education to schoolchildren during these after school sessions.



➤ **Safe Community Concept Painting Contest**

For promoting the Safe Community Concept to local school children, the Fongbin Safe Community Promotion Center held a painting contest of “Creating Our Safe Community” in a total five schools (one high school, four elementary schools) in Fongbin. By holding the painting contest, we hope to develop the safety awareness and concern and provide a free creative opportunity so as to raising the level of safety education among children in Fongbin community. In addition, we also can utilize this great opportunity to evaluate the effectiveness of our promotion programs to school children.



Contest Announcement



First Prize



Second Prize



Third Prize (The Chinese Translation:
No drinking driving)

3.4.3 The senior citizens in the Fong-bin community

An evaluation of the injury records of the community revealed that senior citizen age group is among the injury high risk groups; hence we invested more resources into the injury control program for senior citizens.

➤ **The teaching of the balance exercise**

Tripping is the most common cause of injuries in Fong-bin, and this most easily occur among senior citizens aging 60 years and above. In order to improve this condition, the FCSP together with the community administration office held several senior citizen education activities: volunteers visited local communities and taught balance exercises to the senior citizens. The programmed aimed to help Fong-bin senior citizens regularly do the exercises at home and thereby improve the sense of balance that is gradually deteriorating with age. In the future, the FCSP plans to ask the Mennonite Christian Hospital physical therapist to design a set of balance exercises more suitable to the needs of Fong-bin senior citizens, as well as arrange regular community balance exercise teaching schedules to bring about the effective mitigation of tripping related injuries among Fong-bin senior citizens.

3.4.4 Foreign Spouses

➤ **Safety education and emergency first aid training of foreign spouses**

The arrival of foreign spouses to Fong-bin posted a steady growth since the government opened its doors to foreign spouses. However, due to a difference



in language and culture, the safety awareness and emergency coping skills of foreign spouses tend to be behind that of the local community members. Moreover, some of these foreign spouses are married to older senior citizens that often belong to the illness and injury high risk group of the community; hence it has become a pressing necessity to enhance the safety and first aid training of foreign spouses in the community. For this end, the FCSP and the World Vision Taiwan jointly organized safety and first aid training classes for foreign spouses. The campaign aimed to provide these new members of the community with better safety skills and safeguards in life; at the same time, indirectly upgrade the safety of their families.

3.4.5 High Risk Terrains

➤ **Mudslides**

The mudslide surveillance and control program: the Fuhsing and Tunghsing settlements of Fong-bin community are classified as mudslide high risk zones; hence in addition to the installation of a mudslide surveillance station, safety infrastructures and emergency shelters had been constructed under the assistance of the Cheng Kung University and the World Vision Taiwan.

➤ **The Tunghsing Mudslide Search and Rescue Team**

Aside from pouring in the infrastructure and equipment into the place, Tunghsing community residents organized a local mudslide search and rescue team in an effort to enable the mobilization of first-hour search and rescue efforts at the event of a mudslide. They hoped that the sustained training and the acquisition of search and rescue equipment could enhance the functions of the front-line search and rescue workers at the event of a disaster.





➤ **Seashores and River Banks: The Fong-bin seaside safety improvement plan**

Fong-bin community faces the sea. Except for a few areas that had been developed into recreational areas no proper management measures have been implemented on the coastal areas. Nevertheless, local residents regularly play in the beaches and shores for seaside recreations, fishing and other leisure funs. In fact, Fong-bin is a favorite haunt for out-of-town anglers; especially the *Xiuguluan* River estuary, a popular fishing spot for a kind of small fish. Lack of management also meant lack of proper warning signs or emergency rescue facilities on these beaches. Fortunately, despite the limited resources available, the National Health Insurance Bureau had paid close attention to drowning prevention work and willingly allocated a budget to assist the coastal safety improvement work of Fong-bin Community. The proposal has been submitted for approval. We believe that in the future, we shall see the effective improvement of the safety of the water body environments in Fong-bin.

3.5 Fong-bin Injury Surveillance System

3.5.1 Emergency medical records & the major causes of death census log

During the early period of the Fong-bin safe community promotion work, data from two government service systems were employed; that is, the emergency medical records of the fire station and major causes of death record of the household registration office. These record keeping mechanisms of these two systems have been functional and have maintained population related records for a sustained period of time, hence data they provided an initial understanding of the injury conditions and background in the Fong-bin area. However, the emergency medical records of the fire station had certain limitations. For instance, they only recorded injuries that required emergency medical and ambulance services; moreover the logs hardly contained detailed reports or descriptions of the injuries. As for the household registration office data on major causes of death, since record was kept based on household registrations, it was unable to manifest the actual mortality rate from the reported major causes of death.



3.5.2 Injury surveillance system of the Hualien Hospital in Fong-bin

In order to gather a more complete injury data for the proper implementation of safety promotion work, the Fong-bin Center for Safety Promotion started establishing a Fong-bin Community injury surveillance system. The main purpose of the system was to record the injuries treated in the Hualien Hospital in Fong-bin. Data gathered by the system mainly came from the injury cases reported or admitted into the emergency room of the Hualien Hospital in Fong-bin. Records are prepared by the Hualien Hospital in Fong-bin nursing staff to prevent the data deviation coming from second hand information. Although, the system experienced some record classification mix up and low efficiency data recorded due to the complex nature of clinical medicine during the initial period of its operations, proper education of the nursing staff and the full support of the Hualien Hospital in Fong-bin had enabled the system to post a very remarkable record keeping efficiency during the over a year period that the system has been operational. Now that the Hualien Hospital in Fong-bin became familiarized with the injury surveillance system operations and the injury records gathered in the community have been discussed and evaluated, we were able to discover some flaws in the system; that is, the system could not keep track of injuries that were not treated or reported to Hualien Hospital in Fong-bin, e.g. school campus injuries, direct deaths from injuries, and the injuries of persons who seek traditional therapy and treatment.

3.5.3 School injury logs, farmer and fishermen work related injury logs, and the injury and mortality logs of funeral undertaker

Fong-bin Community has a very small population. It has a relatively low injury rate vis-à-vis other communities; hence every injury case reported takes on a more significant importance. In order to maintain a complete record of the local injury data, the FCSP not only studied government compiled data, but also established several secondary surveillance systems. The move aimed to achieve a complete manifestation and analysis of the Fong-bin injury data through the front-line case admission system; thereafter conduct a thorough study and evaluation of each incident and institution of proper improvements, thereby bringing down the injury statistics of Fong-bin Community closer to zero incidence.



3.5.4 Data registration and analysis of injuries

- **Hospital emergency room injury registration form**

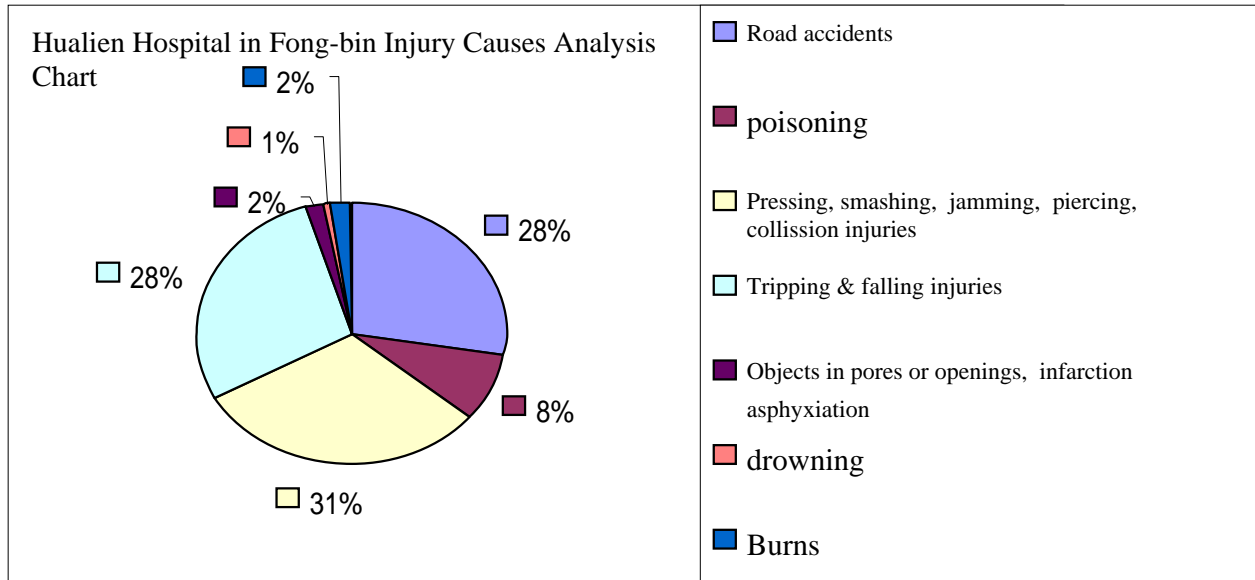
Surveillance system: local data collection system and new additional surveillance system

Place of log: DOH Hualien Hospital in Fong-bin Emergency Room

Time of log: no time limit; every injury case admitted into the emergency room should be registered. Registration personnel: DOH Hualien Hospital in Fong-bin nursing staff Resource utilized: Since the Hualien Hospital in Fong-bin is the only medical service provider in the Fong-bin area, it becomes a natural destination of all local injury cases. The surveillance system established in the Hualien Hospital in Fong-bin is important in the establishment of a complete Fong-bin Community wide injury information record.

Registration form: The injury registration forms provided by the Taiwanese Injury Prevention and Safety Promotion Association.

Registration information: This surveillance mechanism began operations in October 2002. To date, it has maintained sustained recording work and the registration form has undergone one revision process. In order to improve the accuracy and quality of the registration procedure, an injury reporting course was held at the Hualien Hospital in Fong-bin; thereafter, we were able to see an annual improvement in the integrity and accuracy of the reports. This surveillance mechanism is the main source of injury data of the Fong-bin Center for Safety Promotion. The varying types of injuries reported monthly could also determine the focus of the safety promotion period for the period.



- **School injury registration form**

Place of log: clinics of elementary schools in the Fong-bin area (Hsinshih Elem. School, Fong-bin Elem. School, Kangkou Elem. School and Chingpu Elem. School)

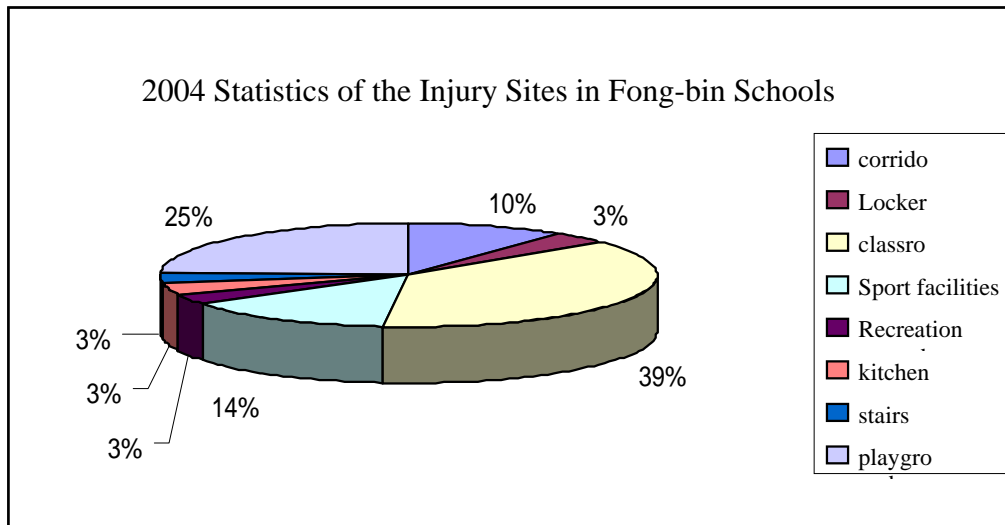
Time of log: school hours

Registration personnel: school nurses

Resource utilized: The person administering the first treatment to a student injured at school is the school nurse, hence it is hoped that through the school injury data reporting, we would be able to achieve a clearer understanding of the major causes of school injuries.

Registration form: Provided by the Taiwanese Injury Prevention and Safety Promotion Association.

Registration information: This surveillance mechanism became operational in February 2004. The purpose of this surveillance system was to record the school injury cases. It was found that under the safety education interaction of the school and the interaction of the school's safety education, not all school injuries are taken to the Hualien Hospital in Fong-bin for treatment; some injuries may have already been treated in the school clinic. Therefore, this system was established to ensure a thorough understanding of the student injuries suffered in the school campus grounds.



- **First aid registration form**

Place of log: Fong-bin Fire Station first aid procedure

Time of log: Response to call time of the Fong-bin Fire Station

Registration personnel: Fong-bin Fire Station firefighter, Fong-bin Center for Safety

Promotion

Resource utilized: Existing first aid and ambulance reporting forms are filed and analyzed to manifest the more advantageous safety work information.

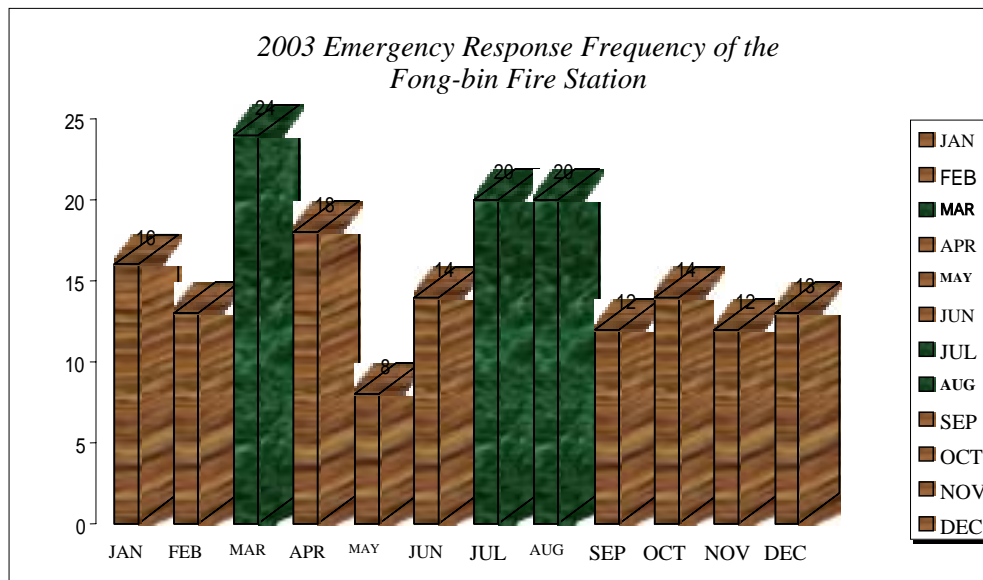
Registration form: The standard first aid and ambulance transporting reporting forms of the Taiwan fire stations.

Registration information: The first aid and ambulance transporting reporting form is an official standardized form for the documentation of all emergency first aid and ambulance transportation work of the nation's fire stations. A form in triplicate has to be completed whenever a fire station responds to a call. A copy is retained at the destination hospital and another is submitted to the respective county or city fire department for filing. The Fong-bin Fire Station furnishes the Fong-bin Center for Safety Promotion with a monthly report of its first aid and ambulance transporting records; thereafter the FCSP keys in data into the computer system for analysis.



Emergency rescue statistics	1998	1999	2000	2001	2002	2003	Total
Traffic accidents (cases)	32	41	34	33	40	42	222
motor vehicle	8	12	14	12	15	31	92
motorcycle	15	23	10	17	20	13	99
pedestrian	4	3	8	3	5	3	26
injured persons	35	43	33	35	45	42	233
Tripping and Falling (cases)	10	12	24	21	15	16	98
Fall	2	0	4	1	1	6	14
Tripping injury	2	10	16	16	7	5	56
Tumbling injury	6	2	4	4	7	5	28
Home accidents	0	3	5	5	7	13	20
Drowning (cases)	1	2	1	1	0	3	5

(Fong-bin Fire Station Injury Statistics for years 1998 to 2003)



● **Traffic accident injury registration form**

Place of log: Police stations in the Fong-bin area (Fong-bin Police Station, Hsinshih Police Station, and Kangkou Police Station)

Time of log: After the occurrence of a traffic accident

Registration personnel: Police personnel of the police stations in the Fong-bin area, Fong-bin Center for Safety Promotion

Resource utilized: Data from existing records are filed and analyzed to manifest the more advantageous safety work information.



Registration form: The standard forms used in the Police Stations

Registration information: Traffic accident related injuries often involve human casualties and property damage; hence the police department needs to record every detail of the incident. This requirement allows a more definite analysis and manifestation of the true causes of traffic accident related injuries. Since the traffic accident related injuries recorded by the police station are usually A1 and A2 class injuries, or in other words, the more serious type of injuries; such report should not be treated as the sole source of traffic accident related injury information.

- **Major causes of death registration form of the household registration office**

Place of log: Fong-bin Household Registration Office

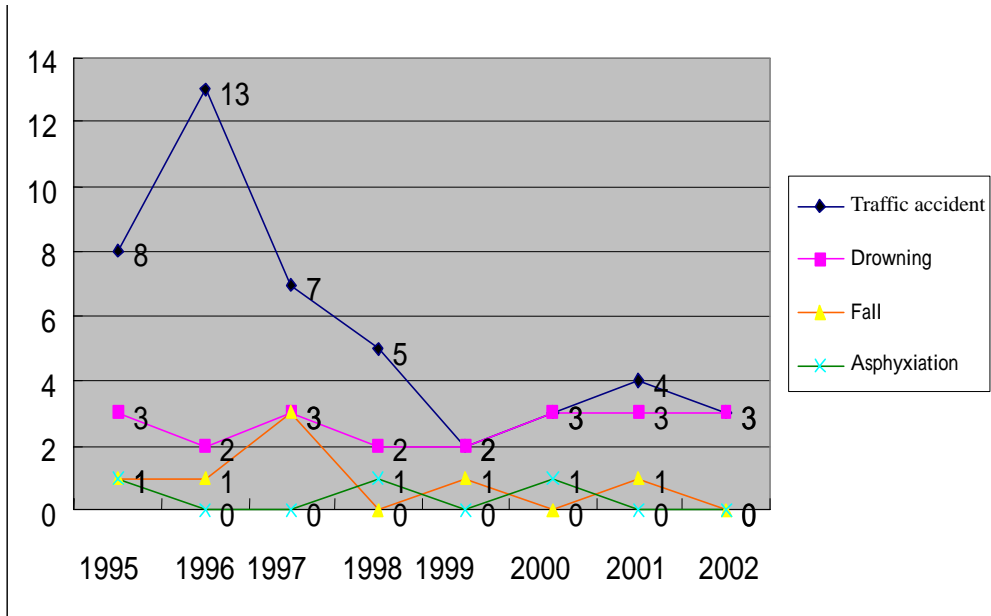
Time of log: Any time after occurrence of a death

Registration personnel: Staff of Fong-bin Health Office

Resource utilized: Taiwan has maintained very thorough household registration information; hence it could be used as another source for injury information.

Registration form: The standard registration form National Household Registration Offices.

Registration information: The household registration offices file records of all major causes of death according to the cause; hence the household records provide a good reference for injury information. Unfortunately, household registration office records are filed based on the permanent place of residence of the people; hence, it could not truly ascertain that the injury causing the death occurred within the Fong-bin area. Still, this information could serve as an important reference for safety education purposes.



- **Farming and fishing related occupation injury surveillance system**

Place of log: Hsinshih Village, Fong-bin community

Time of log: Whenever a farmer or fisherman in Hsinshih Village incurs an injury.

Registration personnel: Fong-bin Center for Safety Promotion Occupational and Child Safety Committee

Resource utilized: The farmers in the Fong-bin area tend to seek traditional folk treatments for their injuries; thus, the FCSP established this surveillance system in Hsinshih Village for a complete recording of the various farming related injuries and detailed understanding of the causes of injuries. It hoped that the system would allow the detailed reporting of injury details at the first line of service.

Registration form: The Farmer Injury Registration Form of the Fong-bin Center for Safety Promotion.

Registration information: The Chair of the Occupational Safety Committee personally visited and participated in farm work; thereafter he/she recorded the complete details of the injury conditions of farmers as well as provide the injured parties the needed assistance.



3.5.5 Injury data analysis and report

The FCSP regularly verifies the operations of the foregoing surveillance system and collects data. Data is then turned over to the Mennonite Christian Hospital for analysis. The monthly reported information is reported in the FCSP Council meeting; sensitive injury issues and conditions are identified and evaluated. Furthermore, the meetings of the task forces for their reference. In order to help the Fong-bin community residents understand the injury statistics in Fong-bin, the FCSP regularly posted the quarterly injury statistics in front of the community. Statistics are later compiled and published into a quarterly newsletter for the information of community members.

3.6 The Safe Community Work Efficiency Evaluation Mechanism

3.6.1 Internal Evaluation

- Fong-bin safe community surveillance system

In order to enable the Fong-bin safe community to integrate and carefully monitor more resources, the major systems were created to attend to all Fong-bin safe community monitoring operations:

System 1: The administrative organization structure of the study plan organized related parties and organized a monitoring task force, which function is to conduct regular and unscheduled evaluations of the activity management performance.

System 2: The members of the promotion committee core task force attend to the reporting of the latest progress of the program, as well as deliberate and evaluate implementation efficiency.

System 3: The system sees to the inspection of the program activity management performance based on the reports and achievements presented to the National Health Insurance Bureau of the Department of Health every six months.



3.6.2 External Evaluation

- Taiwanese Injury Prevention and Safety Promotion Association: reporting on the annual evaluation of the Alishan Safe Community;
- Bureau of Health Promotion, Department of Health, Executive Yuan, Taiwan R.O.C.: examining the annual evaluation report;

Outcomes

Fong-bin community is located at east Taiwan. Although the community has a great lack of human resources, the volunteer team which comprised of local residents became a major force to promote injury prevention and safety promotion programs. Through the cooperation with local official agencies, the promotion work has done a great job on fostering and raising the safety awareness of local residents and improving some risk road and household conditions. The leadership from Mennonite Christian Hospital has supported the volunteer team to develop new strategies and methods to continue the promotion work. The Fongbin Safe Community Promotion Center also collaborates with local tourism enterprises to improve and raise the injuries caused by engaging in recreational activities, such as white-water rafting, surfing, swimming and so on.

After the implementation of Safe Community Program in Fongbin community, the local residents have gained benefits from the program. The staff of the promotion center either leaders or volunteers are very willing to continue the program in order to reduce the injuries and do more for the elderly and children in Fongbin.



3.7 Ongoing Participation in National and International Safe Community Network

In addition to the implementation of the Fong-bin safe community program in the Fong-bin Community, Safe Community Concept was also disseminated throughout Hualien County through the activities organized by the Department of Health (DOH). The Fong-bin Community experience and injury data were also published in the various news media (newspaper, TV and radio reports) for the general information of the Hualien County residents. The news campaign hoped to simultaneously upgrade the safety awareness of the residents of Hualien.

During the period from 2002 to May 2004, Fong-bin community had aggressively participated in the various conferences and activities on injury control and safety promotion held in Taiwan. Through the seminars and activities, FCSP voluntarily presented the various injury control campaigns launched in Fong-bin community and their respective promotion performance. List of the activities are as shown below:

- October 2002: In response to FCSP invitation, Prof. Leif Svanstrom, Chair of WHO Collaborating Centre on Community Safety Promotion and Dr. Joon Pil Cho, Professor, Department of Emergency Medicine School of Medicine, Ajou University, South Korea visited Fong-bin community.
- October 2002: Delegates took part in the Symposium on Safe Community Promotion in Taipei.
- March 18 to 21, 2003: Lien, Chin-Yao attended the WHO 12th International Conference on Safe Communities held in Hong Kong, China, and presented the thesis titled "*The Correlation between Tourism Development and Traffic Accidents*".
- October 2003: In response to FCSP invitation, Mr. Yousif Rahim, Coordinator of Norwegian Safety Promotion Center paid a visit to the Fong-bin community.
- Co-sponsored the Building Safe Communities Program, Symposium on Safe Community Promotion. The 3rd Symposium on Safe Community Promotion was held in August 2003 at the Mennonite Christian Hospital; hence the Fong-bin safe community assisted in the organization of this particular symposium. Moreover, the director of the Fong-bin community Health Office, Civil Affairs Section Chief of the Fong-bin community Administration Office, and the members of the Fong-bin safe community service volunteer team also attended the symposium. It not only boosted



the community's inclination to participate in the entire safe community program implemented in Fong-bin, but also provided the residents with a better understanding of the safe community program being implemented in Taiwan.

- November 2003: Two delegates participated in the 1st National Conference on Safe Community Development in Taiwan and presented two official reports.
- May 2004: Two delegates participated in the 1st National Conference on Injury Control and Safety Promotion in Taichung County and presented two official reports.
- May 2004: One delegate participated in the WHO 13th International Conference on Safe Communities in Prague, Czech Republic.
- October 2004: Five delegates participated in the 2nd Conference on Safe Community Development and Safe Community Achievements Exhibition in Taiwan; had an exhibit booth presenting the Fong-bin safe community program implementation achievements and presented four official reports.
- October 2004: In response to FCSP invitation, Mr. Yousif Rahim, Coordinator of Norwegian Safety Promotion Center paid a second visit to Fong-bin community.
- The media promotion campaign was not limited to press releases in the various newspapers. In October 2003, FCSP launched the Fong-bin Community website introducing the beautiful folk customs and traditions of Fong-bin community and the local community safety promotion developments. Website address is <http://www.mch.org.tw/security/default.htm>



Site visits



Site visits



Fongbin community achievements exhibition in the National conference



National meetings for four safe communities in Taiwan.



Dungshr Community visited Fongbin Community.



IV. Be willing to contribute to strengthening the Network of Safe Communities

Despite the scarcity of resources and shortage in human resources, the Fong-bin Community continued to promote safe community programs and concepts in the community under the spirit of safety first. The safety promotion endeavors were not only implemented to provide the residents with a safe living environment, but also to acquire a WHO safe community accreditation. This safe community accreditation will not only be a source of pride for the Fong-bin Community, but will also provide the tourism industry of the Fong-bin Community new development opportunities. An essential purpose of the program is to draw back the youth population that has wandered away from the community. If Fong-bin would have the honor of gaining accreditation into the WHO network of safe communities, we plan to share the successes in the Fong-bin community experiences with the other communities hoping to join in the safe community network. We shall also assist our neighboring communities conduct their safe community promotion programs and turn Fong-bin into the center of the safe community promotion program for eastern Taiwan.