



## Center for Community Safety Promotion

Affiliate Support Center and Certifying Center for Safe Community  
Ajou University School of Medicine, Suwon, Korea



### Suao Safe Community

**Name of the Community:** Suao Community,  
Yilan County

**Country:** Taiwan

**Number of inhabitants:** 43,305

**Programme started year:** 2007

**Designation year:** 2010



**Full application available:**

[www.hometown.org.tw/blog/suao9968125](http://www.hometown.org.tw/blog/suao9968125)

**For further information contact:**

**Name:** Ms. Hsiu-Yu Tseng

**Institution:** Suao Safe Community Promotion Committee

**Address:** 60, Zhicheng Road, Suao Township

Zip code: 27013

City: Yilan County      Country: Taiwan

Phone (country code included): +886-3-9962185

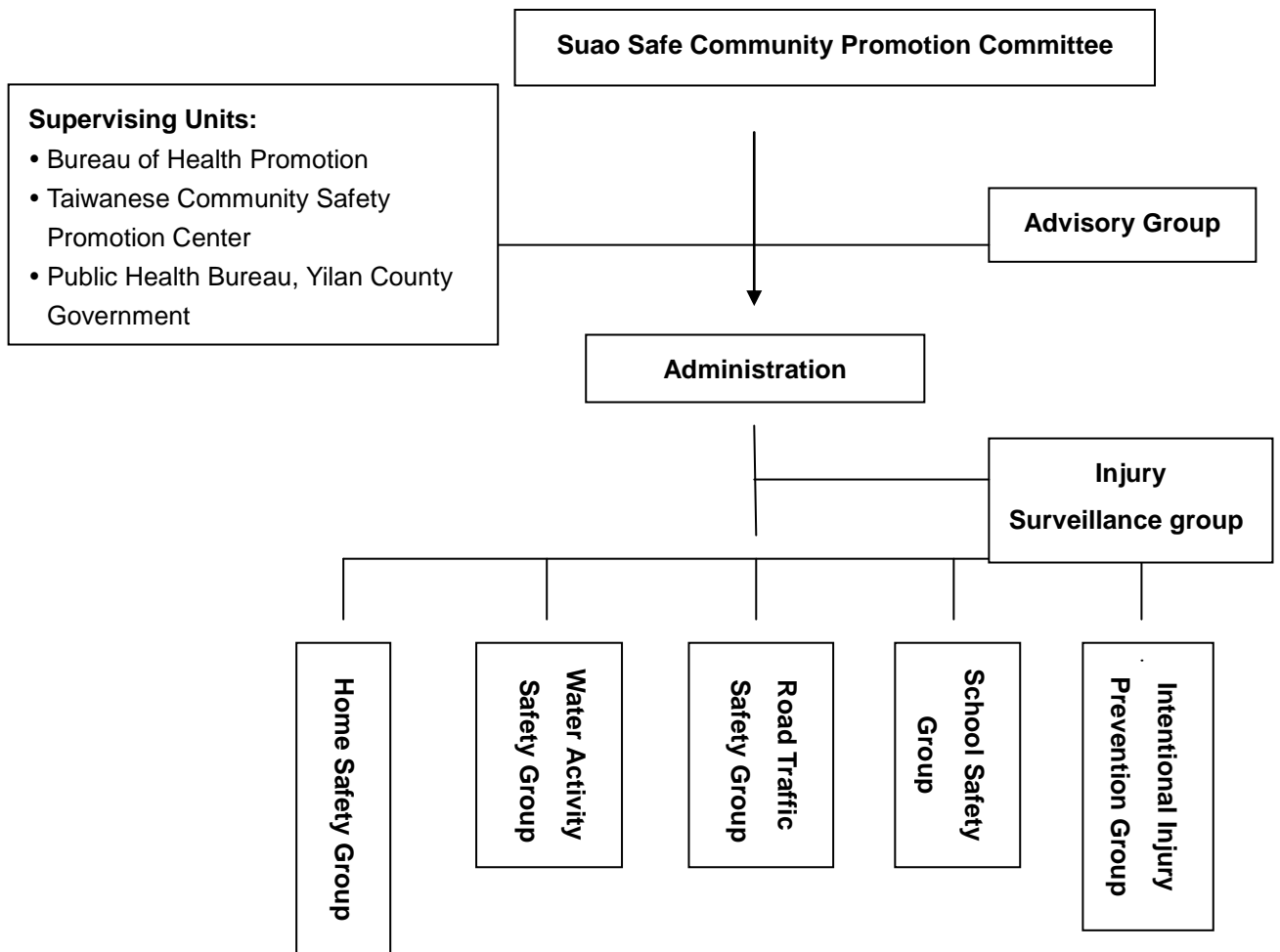
Fax:+886-3-9951669

E-mail: [jsy@mail.e-land.gov.tw](mailto:jsy@mail.e-land.gov.tw)

Info address on www for the institution:

[www.hometown.org.tw/blog/suao9968125](http://www.hometown.org.tw/blog/suao9968125)

■ Organization chart of Suao Safe Community Promotion Committee



■ Suao Safe Communiy Promotion Units and Functions

Unit	Member	Function
<b>Suao Safe Community Promotion Committee</b>	<b>Chairperson:</b> Mayor of Suao Town <b>Deputy Chairperson:</b> Six Representatives from Town Representative Council, Police Department, School, Public Health Center, Suao Fishermen's Association	Assist integrating community resources and monitor safety promotion developing progresses
<b>Advisory Group: County Council Representatives</b>	Hon. Rep. Cheng-Nan Chen, Hon. Rep. Ci-Shan Lin and Hon. Rep. Jin-Lin-Chen	
<b>Administration</b>	One Executive Officer and one Executive Secretary	Assist data organizing and related tasks within Suao Safe Community Promotion Committee, conduct training programs,

Unit	Member	Function
<b>Injury Surveillance Group</b>	<p><b>Convener:</b> Deputy Superintendent of Suao Veterans General Hospital</p> <p><b>Member:</b> Volunteers, Public Health Center, Suao Veterans General Hospital, Village / Neighborhood Magistrate's Offices, Police Department, Fire Department, Household Registration Office and Representatives of Social Affairs Department</p>	Establish injury surveillance system, after compiling injury data and making analysis, report to the SC committee
<b>Working Group</b>		
<b>Home Safety Group</b>	<p><b>Convener:</b> President of Health Promotion Association</p> <p><b>Members:</b> Health Promotion Association, Community Development Association, Neighborhood Magistrate's Offices, Volunteers, Neighborhood Watch Guards and Collaborative Association for Suao Community Elders</p>	Assist conducting home safety and health promotion programs for elders and children.
<b>Water Activity Safety Group</b>	<p><b>Convener:</b> Suao Fishermen's Association</p> <p><b>Members:</b> Town Representative Council, Lanyang Rescue Association, Yilan Water Life Saving Association, Coast Guard Administration, Coastal Patrol Directorate General, Chong Tao Buddhist Auditorium, Town Hall, Volunteers, Community Development Association, Northeast and Yilan Coast National Scenic Area Administration, Suao Fishermen's Association and County Council Representatives</p>	Assist water activity safety assessments, life guard training and rescue, and water activity safety promotion.
<b>School Safety Group</b>	<p><b>Convener:</b> Principal of Masai Elementary School</p> <p><b>Members:</b> School Staff, Volunteers of Parents</p>	In charge of school environment safety assessments, and water activity safety education promotion programs for students

Unit	Member	Function
	to Students, Community Volunteers, Parent-Teacher Association and Police Department	
<b>Road Traffic Safety Group</b>	<b>Convener:</b> Deputy Director General of Suao Police Bureau <b>Member:</b> Police Department, Construction Section, Neighborhood Watch Guards, Volunteers, Residents, Neighborhood Magistrate's Offices, Forth Maintenance Office, and Hong Yi Volunteer Service Association	In charge of road safety assessments and road traffic injury prevention programs
<b>Intentional Injury Prevention Group</b>	<b>Convener:</b> Director of Public Health Center <b>Members:</b> Social Affairs Section, Health Promotion Association, Neighborhood Magistrate's Offices, Volunteers and Residents	Assist conducting intentional injury prevention and safety promotion programs

■ Suao Safe Community Program

Safety Promotion Program	Improvement Project	Age				
		0-4	5-14	15-24	25-64	65↑
<b>Home</b> * Elder Safety * Environment Safety * Children Safety	Home Safety Assessment and Improvement	*	*	*	*	*
	Home Environment Safety Improvement and Follow-Up Checkup Service	*	*	*	*	*
	Home Safety Behavior Education	*	*	*	*	*
	Bathroom Slippery-Proof Improvement & Handrail Installment Service	*				*
	Fall Injury Prevention Education Program for Elders					*
	Bump Injury Prevention Education for Children	*				
	Medicine Safety Education	*	*	*	*	*
	Home Safety Education	*	*	*	*	*

Safety Promotion Program	Improvement Project	Age				
		0-4	5-14	15-24	25-64	65↑
<b>Water Activity</b> * Harbor Safety * Water Environment Safety * Water Activity Safety	Environment Safety Assessment for High-Risk Harbors			*	*	*
	Environment Safety Assessment for High-Risk Harbors			*	*	*
	Water Activity Safety Training for Seed Volunteers			*	*	
	Water Activity Safety Education		*	*	*	
	Safety Management & Facility Improvement for Harbors	*	*	*	*	*
	Dangerous / Unsafe Water Environment Improvement		*	*	*	
<b>Road Traffic</b> * Road Safety * Road Environment Safety * Helmet-Wearing Project for Motorcycling * Road Safety for Pedestrians	High-Risk Road Environment Safety Assessment	*	*	*	*	*
	High-Risk Area Environment Assessment	*	*	*	*	
	Road Safety Education for Seed Volunteers			*	*	
	Community Road Safety Education			*	*	
	High-Risk Road Environment Improvement	*	*	*	*	*
	Education on Traffic Safety Knowledge		*	*	*	*
	Law-Enforcement	*	*	*	*	*
<b>School</b> * School Safety * School Environment Safety * School Campus Safety	Road Safety Education for Students		*	*	*	
	Road Safety Education Promotion Program for School Teachers and Parents			*	*	
	Campus Emergency Management System		*			
	Dangerous / Unsafe School Environment Assessment Program		*	*		

Safety Promotion Program	Improvement Project	Age				
		0-4	5-14	15-24	25-64	65↑
	Campus Facility Improvement and Periodical Maintenance		*	*	*	
	Helmet-Wearing Education for Cycling		*			
	Cycling Safety Education Training Camp		*			
	Drowning Prevention Training – “Safe Summers”		*			
<b>Intentional Injury Prevention</b> * Public place Environment Safety * High-Risk Environment Assessment * High-Risk Environment Safety Issue * Suicide Prevention	High-Risk Environment Assessment	*	*	*	*	*
	High-Risk Environment Improvement		*	*		
	On-Site Environment Assessing, Examining, and Analyzing Program		*	*		
	Education on Personal Safety Knowledge	*	*	*	*	*
	Training for Suicide Doorkeepers			*	*	
	Case Management, Visit and Follow-Up Checkup for Mental Disordered Patients		*	*	*	*
	Visit & Follow-up Checkup Service for Suicide-attempted Cases			*	*	*
	Community Suicide Prevention Education Training Program			*	*	
	Vocational Assistance from Mental Rehabilitation Association			*	*	

Safety promotion project along the harbor and coastline



Safety infrastructures  
(Improved)

Vehicle barriers along the Harbor  
coastline (Improved)

Life guard standing post  
(Improved)

■ **Suao Injury Surveillance System**

Unit in Charge: Suao Township Health Office

ITEM	FREQUENCY	UNITS	MEMBERS
Community Injury registration	Monthly	Village / Neighborhood Magistrate's Office	Village / Neighborhood Magistrates, Volunteers and Nurses
Road Traffic Injury records	Monthly	Police Department	Police Officers
Emergency rescue records	Monthly	Fire Department	Firemen
School Injury data	Monthly	School Health Center	Nurses
Vital statistics	Monthly	Household Registration Office Department of Health	Nurses

■ **Suao Community unintentional Injury analysis**

Category Year	Road Traffic Injury	Fall Injury	Injury caused by bumping or Striking	Injury caused by being caught in between Objects	Injury caused by Poisoning	Sports Injury	Total
2007	8	20	0	34	1	1	64
2008	0	93	448	15	7	2	565
2009	2	123	76	7	0	0	208
Total	10	236	524	56	8	3	837

■ **Number of Suicide and attempted suicide in Suao Township and Yilan County from 2007 to July, 2010**

Year Area	2007	2008	2009	2010 (Jan.~Jul.)
Suao Township	8	12	7	2
Yilan County	108	81	99	56

**Staff**

Number: 2 part-time

Group responsible for cross-sectional group:

Suao Safe Community Promotion Committee

Public Health/ Health Promotion Partnership:

Suao Township Health Center

