



Application Report
to be an
Affiliate Safe Community
Support Centre

Published by
Taiwanese Community Safety Promotion Center,
Taiwanese Injury Prevention and Safety Promotion Association,
Taiwan

October 11th, 2009

Edited by
Lu Pai



For further information contact:

Lu Pai, Ph.D.

Associate Professor

Institute of Injury Prevention and Control, Taipei Medical University, Taiwan

Chair

Taiwanese Community Safety Prevention Center, Taiwan

Secretary-General

Taiwanese Injury Prevention and Safety Promotion Association (TIPSPA),
Taiwan

Ph.D. in Educational Psychology at SUNY Buffalo and post-doctoral training in
Injury Prevention at Johns Hopkins University, USA

Address: 4F, 250, Wu-Hsin Street, Taipei 110, Taiwan

Tel / Fax : +886-2-2735-3884

E-mail : lupai@gmail.com; safetaiwan@gmail.com



CONTENTS

1. INTRODUCTION 4

- 1.1 Developing Safe Community Program in Taiwan 5
- 1.2 Mission 6
- 1.3 Research team 7

2. To Popularize the Safe Community Model 10

3. Indicators for Affiliate Safe Community Support Centre12

- 1. The provision of Centre programs and services utilize multidisciplinary and cross-sector approaches. 12
- 2. The Centre provides a framework for promoting collective action which includes involvement with community networks. 12
- 3. The Centre provides consultative support to communities in the establishment of Safe Community initiatives. 13
- 4. The Centre facilitates and supports community-based strategic planning processes. 13
- 5. The Centre demonstrates leadership and stewardship in addressing priority injury issues, high risk, and vulnerable groups. 14
- 6. The Centre provides expert services and knowledge in the area of injury data and injury surveillance issues. 14
- 7. The Centre demonstrates a long-term commitment to supporting Safe Communities and the Safe Community Network within their organizations strategic plan. 14
- 8. The Centre supports those responsible at the community level to utilize appropriate indicators to evaluate community processes, effects of change and injury rates. 15
- 9. The Centre disseminates their experiences both at national and international levels. 15
- 10. The Centre reports on their Safe Community activities and research efforts. 16

Appendix

Flowchart for developing a safe community program

1. INTRODUCTION

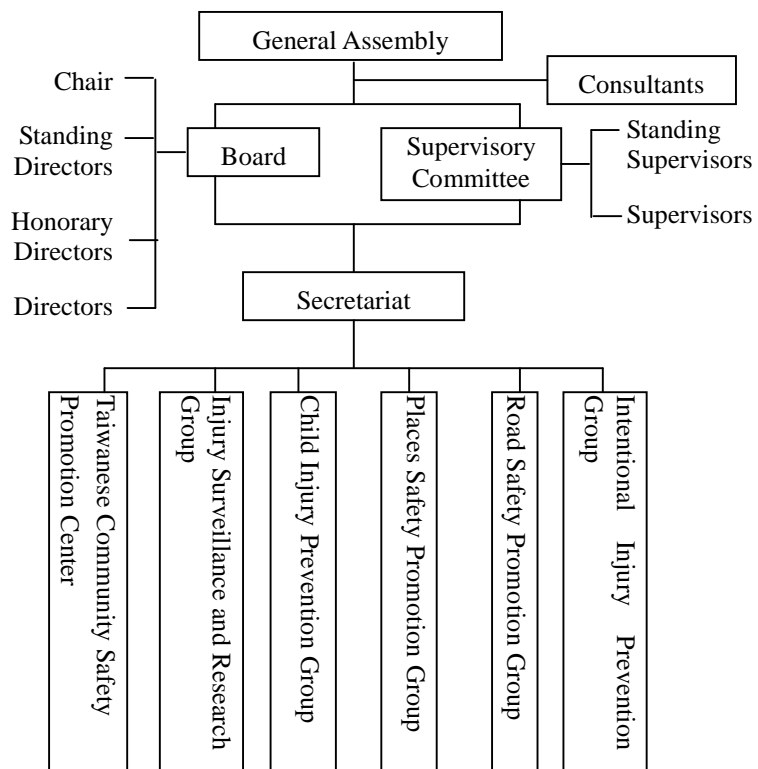
The Taiwanese Injury Prevention and Safety Promotion Association (TIPSPA for short) is a non-profit organization. Its objectives are to unite zealous national-wide organizations, groups and professionals to Injury prevention and Safety Promotion and promote national injury prevention projects and research so as to reduce the loss of life and promote people's health. Moreover, the Association also aims at building a safer environment and creating a Safe Culture in Taiwan. The association, now in conjunction with the Graduate Institute of Injury Prevention and Control, Taipei Medical University, has good cooperation and connection with government offices, academia, industries, and medical care systems.

The association was established in 1997 by a group of neural surgeons and public health professionals. The original name of the association was Taiwanese Trauma Prevention Association. In 2002, the name was changed to Taiwanese Injury Prevention and Safety Promotion Association (TIPSPA) for expanding its function and broadening the recruitment of members from various professions. The professional backgrounds of our members now include medical care, public health, transportation, education, police, fire prevention, etc.. TIPSPA has five working groups and a center (see organization chart below). The Injury Surveillance and Research Group studies injury trend and seeks for injury causes and proper preventive measures. Integrating research and practice experience, we developed strategies and necessary tools for safety promotion. Taiwanese Community Safety Promotion Center (TCSPC) aims to assist communities in developing safe community program, and is the window for international contact..

The director of TCSPC, Dr. Lu Pai, is the former chair of TIPSPA, introduced the safe community model to Taiwan in 1997. Under the support from the Bureau of Health Promotion, Department of Health, Dr. Pai inspired four featured communities, Fongbin--an aboriginal community at littoral, Dungshr--a rural community, Alishan--an aboriginal community at mountain area, and Neihu--an urban community, to develop safe community program. All 4 communities were designated as International Safe Communities in October, 2005. After TCSPC was set up in 2006, more and more communities wish to join the safe community movement. In 2008, 3 more communities were designated and joined International Safe Communities Network.

School safety is an important component of a safe community. In order to inspire schools to participate in school safety promotion, we invited Memory Space Institute joining TIPSPA as a group member for promoting International Safe Schools program under the Safe Communities Movement.. So far, 15 schools, including elementary school, junior high schools, senior high schools and a university, have been designated as International Safe Schools

Organization Chart



1.1 Developing Safe Community Program in Taiwan

■2002

Four communities, Fongbin, Dungshr, Alishan, and Neihu, began to collaborate their cross-sectional group for safety promotion. During the critical moment, we invited Prof. Leif Svanström and Prof. Joon Pil Cho to instruct communities in person. We also held a symposium to impress the concept of safe community.

■2003

Mr. Yousif Rahim, coordinator of European Safe Community Network, was invited to give suggestion to these four communities. The yearly National Conference on Safe Community also invited experts from Norway and Korea to share their experience of safety promotion and injury prevention.

■2004

Mr. Yousif Rahim and Mr. Paul Kells, Chair of Canada Safe Community Foundation, came to visit four communities and had good exchange in the yearly National Conference on Safe Community.

■2005

Fongbin, Dungshr, Alishan, and Neihu fulfill the Safe Community Indicators and were designated as the 91st to 94th Safe Communities. We host the 3rd Asia Regional Conference on Safe Community.

■2006

In order to assist more communities in Taiwan to develop Safe Community Program, the Taiwanese Community Safety Promotion Center, TCSPC (a network model of learning organization), was established on 19th January, 2006. TCSPC works with the team members from four International Safe Communities and set up four Regional Support Centers to assist neighbor communities to develop community-based injury prevention and safety promotion programs. Ten new forces had joined in the safe community movement. The national Conference was held to share experience nationally as well as internationally. International experts from New Zealand, South Korea and Thailand were invited to give lectures and join discussion with delegates from our local communities.

■2007

In 2007, we strengthened regional support centers' function, with more training courses to cultivate staffs' abilities. As a result, four regional support centers have played good roles as a consultant, and the number of developing communities for Safe Community reached 16. The TCSPC invited overseas experts to the communities for site visits, and held training courses to cultivate safety promotion abilities of the community members.

In the national conference, communities and schools worked together for safety promotion and there were five schools designated as the International Safe School in the scene.

Not only exchanging the domestic community's experience, TCSPC also assisted community members to participate in the 4th Asian Regional Conference on Safe Communities. The Asia Region Safe Community Network was formally established at the same time, and Mr. W. S. Tang was elected as the Chair, Dr. Lu Pai, Vice-Chair.

■2008

Thirty-four communities were involved in the safe community movement. Three communities, Zhongzheng, Shoufeng, and Shihkang, met the criteria of International Safe Community, and designated as the 146th to 148th ISC. 2008 National Conference on Safe Communities and Safe Schools in Taiwan welcomed 11 foreign professionals to share their safety promotion experience. In this conference, 3-community and 9-school designation ceremony was held.

■2009

The number of developing communities for Safe Community reached 44.

Accumulating our developing experience in communities, we compile TCSPC Trainer Handbook and Guidelines for Developing Safe Community Program. We will assist four communities to apply for International Safe Community. The TIPSPA is going to submit an application report as the Affiliate Support Center of WHO CCCSP.

1.2 Mission

The Taiwanese Community Safety Promotion Center of TIPSPA will support comprehensive systemic approach of Injury Prevention and Safety Promotion within a Community that we serve, in conjunction with the WHO Collaborating Centre on Community Safety Promotion at Karolinska Institutet in Stockholm, Sweden.

The Center will meet the following indicators:

- 1) The provision of Centre programs and services utilize multidisciplinary and cross-sector approaches.
- 2) The Centre provides a framework for promoting collective action, which includes involvement with community networks.
- 3) The Centre provides consultative support to communities in the establishment of Safe Community initiatives.
- 4) The Centre facilitates and supports community-based strategic planning processes.
- 5) The Centre demonstrates leadership and stewardship in addressing priority injury issues, high risk, and vulnerable groups.
- 6) The Centre provides expert services and knowledge in the area of injury data and injury surveillance issues.
- 7) The Centre demonstrates a long-term commitment to supporting Safe Communities and

the Safe Community Network within their organizations strategic plan.

- 8) The Centre supports those responsible at the community level to utilize appropriate indicators to evaluate community processes, effects of change and injury rates.
- 9) The Centre disseminates their experiences both at national and international levels.
- 10) The Centre reports on their Safe Community activities and research efforts.

1.3 Research Team

➤ TIPSPA

| Name / Position | Title / Organization | Specialty |
|---|---|--|
| Dr. Shin-Han Tsai / Chairman | Chair, Graduate Institute of Injury Prevention and Control, Taipei Medical University | Neurobiology Injury Prevention Aeromedical Transport |
| Dr. Lu Pai / Secretary General | Associate Professor, Graduate Institute of Injury Prevention and Control, Taipei Medical University | Injury Prevention and Safety Prevention Safe Community Program Promotion Statistics Survey Design |
| Dr. Da-Yu Lin / Standing Director | Professor, Central Policy University | Transportation System Analysis |
| Dr. Hung-Yi Chiou / Standing Director | Chair, School of Public Health, Taipei Medical University | Molecular Epidemiology Risk Evaluation |
| Dr. Wei-Mo Tsai / Standing Director | Director, Department of Emergency Medicine, Mackay Memorial Hospital—Hsinchu Branch | Emergency Medicine Disaster Medicine Toxicology Medicine |
| Dr. Tsung-Hsueh Lu / Standing Director | Associate Professor, Institute of Public Health, National Cheng Kung University | 1. Cause of death statistics – quality improvement, multiple cause of death analysis, certification 2. Injury epidemiology – surveillance, data linkage, motor vehicle injury, methodology 3. Political economy of health, inequality in health, health transition |
| Dr. Miao-Ju Chow / Director | Assistant Professor, Department of Nursing, Fu Jen Catholic University | Pediatric nursing, kangaroo care, early intervention for children with developmental delay |
| Dr. Chi-Zong Hung / Director | Superintendent, Taiwan Non-profit Proprietary Miners Hospital | Neurology |
| Dr. Kai-Guo Chang / Director | Vice-Supervisor, Institute of Transportation, Ministry of Transportation and Communication | Transportation System Analysis |
| Dr. Hsin-Li Chang / Director | Professor, Dept. of Transportation Technology and Management, National | Transportation Safety Traffic Engineering and |

| | | |
|---|--|--|
| | Chiao Tung University | Control Travel Demand and Behavior Railway Engineering and Operation |
| Dr. Jau-Yih Tsauo / Director | Associate Professor, Dept. of Physical Therapy, National Taiwan University | Orthopedic physical therapy Injury Epidemiology |
| Ms Chia-Yin Guo / Director | Vice-Chair, Counting Room, Taipei Medical University-Wan Fang Hospital | Public Health Healthcare Management |
| Dr. Shien-Ping Huang / Director | CEO, Taiwan Children's Commodities R&D Center | Industry Safety Environment Protection Occupational Disease Identification Commodity Inspection Technology Management |
| Dr. Che-Ming Yang / Director | Director, Bureau of International Cooperation, Dept. of Health, Executive Yuan | Medical Affairs Management Medical Laws and Regulations Medical Ethics |
| Ms Erica Yang / Director | Council Member, TIPSPA | Statistics Child Safety |
| Dr. Cheuk-Sing Choy / Director | Director, Dept. of Emergency Medicine, Taipei Medical University Hospital | Critical Medicine Injury Epidemiology Public Health Critical Medicine Laws and Regulations |
| Dr. Shyr-Chyu Chen / Standing Supervisor | Director, Dept. of Emergency Medicine, National Taiwan University Hospital | Emergency Medicine |
| Dr. Yu-Mei Yu / Supervisor | Member, Taiwan Nursing Accreditation Council | Woman Health Qualitative Research Health Administration |
| Dr. Heng Chang / Supervisor | Vice Superintendent, Shin Kong Wo Ho-Su Memorial Hospital | Cardiac Surgery |
| Dr. Zi-Yi Chen / Supervisor | Adjunct Professor, National Taiwan Normal University | Transportation System Analysis Bike Safety |
| Dr. Ming-Ying Liu / Supervisor | Director, Dept. of Neurosurgery, Tri-Service General Hospital | Cranial Nerve Chiropractic |



2. To Popularize the Safe Community Model

◆ Designated Communities

| Community | Population | Program started year | Designation year | No. of ISC |
|------------|------------|----------------------|------------------|------------|
| Fongbin | 5,929 | 2002 | 2005 | 91 |
| Dungshr | 56,452 | 2002 | 2005 | 92 |
| Alishan | 1,536 | 2002 | 2005 | 93 |
| Neihu | 261,000 | 2002 | 2005 | 94 |
| ZhongZheng | 159,486 | 2005 | 2008 | 146 |
| ShouFeng | 19,295 | 2005 | 2008 | 147 |
| ShihKang | 16,187 | 2004 | 2008 | 148 |

◆ Developing Communities

| Community | Population | Program started year |
|-----------|------------|----------------------|
| DongShan | 51,391 | 2006 |
| ZhouYing | 186,026 | 2006 |
| HsinKang | 35,116 | 2006 |
| BaDer | 3,440 | 2006 |
| YungHo | 4,264 | 2006 |
| BeiTun | 226,539 | 2006 |
| ChangJung | 1,262 | 2006 |
| HePing | 10,860 | 2006 |
| SuAo | 43,306 | 2007 |
| YuanShan | 32,318 | 2008 |
| DaTong | 126,090 | 2008 |
| WenShan | 261,842 | 2008 |
| NanGang | 113,716 | 2008 |
| XinYing | 228,577 | 2008 |
| TamSui | 132,101 | 2008 |
| ShuLin | 3,025 | 2008 |
| GungGuan | 34,744 | 2008 |
| JhuShan | 58,890 | 2008 |
| LunBei | 27,798 | 2008 |
| JingGuo | 6,168 | 2008 |
| JinHwa | 6,453 | 2008 |

| | | |
|------------------------------|---------|------|
| LinYuan | 71,336 | 2008 |
| JiouRu | 23,049 | 2008 |
| TouCheng | 31,122 | 2008 |
| LanYu | 3,821 | 2008 |
| KinHu | 14,793 | 2008 |
| LuJhu | 17,774 | 2009 |
| LongGong | 19,181 | 2009 |
| HsinChu NanMen | 14,366 | 2009 |
| East District, Taichung City | 74,024 | 2009 |
| BeiTun, Taichung City | 242,274 | 2009 |
| East District, ChiaYi City | 128,409 | 2009 |
| JiaSian | 7,606 | 2009 |
| LouDong | 72,019 | 2009 |
| YiLan | 96,094 | 2009 |
| ZhuoXi | 6,811 | 2009 |
| SiouFong | 9,156 | 2009 |

3. Indicators for Affiliate Safe Community Support Centre

3.1 The provision of Centre programs and services utilize multidisciplinary and cross-sector approaches.

TIPSPA members, mastering medical care, public health, transportation, or education, individually works in academic institute, government, or industry. They provide communities professional assistance to reduce injury and to promote safety through participating in official injury prevention committees, holding national safety promotion conferences, running training courses or workshops, publishing research papers, or using websites to spread related knowledge.

The Taiwanese Community Safety Promotion Center, TIPSPA, makes use of the plentiful research resources to assist communities to develop various injury prevention and safety promotion programs by applying the Safe Community Concept and adhering to International Safe Community Indicators. The center is also functioning as a dialogic platform for communities, government officials, and professionals in converting jury prevention and safety promotion policies and intervention programs into practice.

3.2 The Centre provides a framework for promoting collective action which includes involvement with community networks.

The Taiwanese Safe Community Network is operated by the Taiwanese Community Safety Promotion Center (TCSPC), established by Taiwanese Injury Prevention and Safety Promotion Association on 19th January, 2006. TCSPC works with the team members from four International Safe Communities and set up four Region Support Centers to assist neighbor communities to develop community-based injury prevention and safety promotion programs.

The functions of TCSPC are as below:

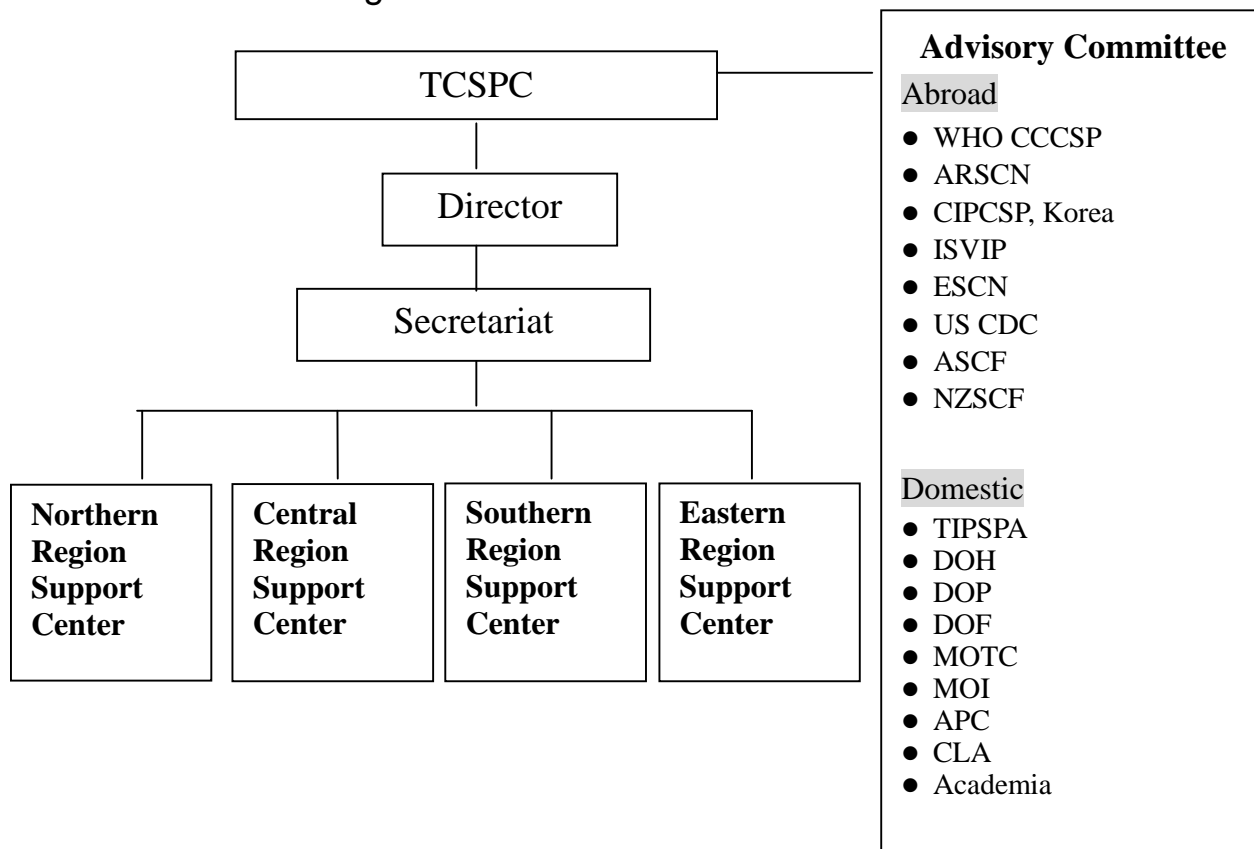
- To hold national training courses for communities,
- To hold conferences, symposiums, or site-visits,
- To interchange information of national or international safe community network,
- To take charge of evaluation on communities and region support centers,
- To be engaged in research on safety promotion and injury prevention,
- To develop resources for practice need.

The functions of TCSPC's support centers are as below:

- To assist communities to develop their program adhering to the indicators of International Safe Community,
- To transport the network information to communities,
- To share their experience of developing a safe community program.

The organization chart of TCSPC follows:

➤ TCSPC Organization Chart



➤ Members of TCSPC

| Name | Position | Main Job | Specialty |
|--------------------|-------------------------------------|---|--|
| Dr. Lu Pai | Director | Associate Professor, Graduate Institute of Injury Prevention and Control, Taipei Medical University | Injury Prevention and Safety Prevention Safe Community Program Promotion Statistics Survey Design |
| Ms Jayce Lee | Executive Secretary | Executive Secretary, TCSPC | Safe Community Program Promotion |
| Ms Cofe Lin | Secretary | Researcher, TCSPC | Statistics Safe Community Program Promotion |
| Ms Emily Hung | Secretary | Executive Secretary, TIPSPA | Statistics Safe Community Program Promotion |
| Mr. Founde Chang | CEO, Northern Region Support Center | Chief Secretary, Neihsu Community University, Taipei City | Safe Community Program Promotion General Affairs Management |
| Ms Tsui-Chuan Kang | Executive | Secretary, Neihsu | Safe Community Program |

| | | | |
|--------------------|---|---|---|
| | Secretary, Northern Region Support Center | Community Safety and Health Promotion Association | Promotion |
| Mr. Po-Lu Hsu | CEO, Central Region Support Center | Supervisor, Dungshr Police Station, Taichung County | Safe Community Program Promotion |
| Ms Wen-Yi Ku | Executive Secretary, Central Region Support Center | Supervisor, Community Development Sector, Dungshr Farmer Hospital | Safe Community Program Promotion Nursing |
| Mr. Mao-An Lin | Advisor, Southern Region Support Center | Advisor, Chia-Yi Evergreen Healthcare Center | Safe Community Program Promotion Long-term Healthcare |
| Ms Ching-Shin Chen | CEO, Southern Region Support Center | Supervisor, Chia-Yi Christian Hospital | Safe Community Program Promotion Nursing |
| Ms Ivy Lu | Secretary-General, Southern Region Support Center, TCSPC | Chia-Yi Evergreen Healthcare Center | Safe Community Program Promotion General Affairs Management |
| Mr. Mark Lan | CEO, Eastern Region Support Center | Chief, Mennonite Christian Hospital | Safe Community Program Promotion General Affairs Management |
| Ms Jia-Rong Lee | Executive Secretary, Eastern Region Support Center | Mennonite Christian Hospital | Safe Community Program Promotion |



3.3 The Centre provides consultative support to communities in the establishment of Safe Community initiatives.

TCSPC adheres to the indicators of ISC to assist communities to develop safe community program. We interpret the safe community model by holding orientations, workshops, or practice trainings. In order to provide appropriate advices and assistance to the communities that are interested in joining safe community movement, we divide the development process of a safe community into four phases: starting, developing, refined, and accomplished. In every phase, we have a detailed flowchart for reference (see attachment). TCSPC members provide consultative support to communities according to their development phases. .So far, there were 4 communities designated in 2005, and 3 in 2008.

3.4 The Centre facilitates and supports community-based strategic planning processes.

TCSPC designed a series of safe community planning guide and program implementation guide for communities to follow and provides training courses, workshops, and on spot consultation. In addition, TCSPC arranges site visits for communities to learn from each other. All the materials and the activities information are posted on the web sites of TCSPC and TIPSPA.



3.5 The Centre demonstrates leadership and stewardship in addressing priority injury issues, high risk, and vulnerable groups.

TIPSPA is the only academic association focusing on injury prevention. Now in conjunction with the Graduate Institute of Injury Prevention and Control, Taipei Medical University, and in cooperation with government offices, academia, industries, and medical care systems, we are able timely to offer critical opinions for injury prevention and safety promotion.

Aiming for high risk group/environment/situation injury prevention, TIPSPA holds symposiums or workshops with exhibition every year. Examples are “National Conference on Childhood Injury Prevention with Exhibition of Safe Toys” in 2002 and 2003, “Symposium on Road Traffic Safety” in 2004, “Automobile Injury prevention and Safety Promotion Seminar” in 2005, “Workshop on Using Safety devices with Press Conference & Exhibition of Car Seats” in 2007, “Symposium on Childhood Injury Prevention & Control with Exhibition of Safe Products for Babies” in 2007, “Symposium on Safety of Leisure and Sports with the Exhibition of safety devices and guide books for bicycling” in 2008, “Symposium and Exhibition on Safe Bus” in 2009.

3.6 The Centre provides expert services and knowledge in the area of injury data and injury surveillance issues.

TIPSPA was entrusted by the Department of Health to develop an injury data registry system in 1999. Eight different colored forms were designed to collect injury data according to the types of injuries, including: road traffic, fall, burn, poisoning, obstruction & suffocation, submersion & drowning, injury caused by cutting, striking, or caught in between objects, and injury caused by human, plant or animal. It was an emergency department-based System and was intended to be used by all hospitals nationwide. However, due to the difficulties of formulating national policies, The system was adopted only by few hospitals that allied to safe communities. The system was then evolved into a comprehensive online Injury Surveillance System (TIPSPAISS) that can help communities not only in collecting data, but also in analyzing and using injury information. ICD codes and basic descriptive epidemiological reports can be generated automatically. Further detailed analyses can also be provided under the request.

3.7 The Centre demonstrates a long term commitment to supporting Safe Communities and the Safe Community Network within their organizations strategic plan.

The Taiwanese Community Safety Promotion Center has gained financial assistance from the Department of Health, Taipei City Government, and Council of Indigenous Peoples since 2002. The number of communities in developing safe community programs has increased from 4 to 44. TIPSPA works in conjunction with the Graduate Institute of

Injury Prevention and Control, TMU (the only academic institute aiming at injury prevention in Taiwan), and gets strong, long-term backup forces in theories and practice..

We encourage and help the community to establish a legally registered non-government organization for its sustainable development. We also help the community to have good long-term collaboration with its local government and other public or private sectors to work on safe community program.

3.8 The Centre supports those responsible at the community level to utilize appropriate indicators to evaluate community processes, effects of change and injury rates.

Evaluation is the key point in a safe community program. TCSPC Trainer Handbook gives detailed checklist for different progress. It gives community leaders a clear picture of their achievements. The Handbook also serves region support centers' crew as a good tool for community evaluation. Besides, TCSPC provides injury surveillance data to help community evaluate the effects of injury prevention.

3.9 The Centre disseminates their experiences both at national and international levels.

Bringing safe community program in since 2002, TIPSPA has been holding national conference on safe community development. We invite WHO CCCSP professionals to give keynote speech for people here, onsite visit, too. We also organize people to join in international conferences every year:

- March 2003, the 12th International Safe Community Conference, Hong Kong, 4 papers presentation
- June 2004, the 13th International Safe Community Conference, Czech, 8 papers presentation
- June 2005, the 14th International Safe Community Conference, Norway, 12 papers presentation
- October 2005, the 3rd Asia Regional Safe Community Conference, Taiwan hosting
- June 2006, the 15th International Safe Community Conference, South Africa, 12 papers presentation
- November 2007, the 4th Asia Regional Safe Community Conference, Thailand, 6 oral presentations, 25 posters
- March 2008, Kameoka Community Designation Ceremony & Injury Surveillance Conference, Japan
- March 2008, Asia Safe Community Network Workshop, Hong Kong
- October 2008, the 17th International Safe Community Conference, New Zealand, more than 12 papers presentation
- December 2008, the 16th OSH Seminar, Hong Kong
- March 2009, receiving visit from Atsugi Community, Japan

- August 2009, the 18th International Safe Community Conference, Columbia, hosting safe school workshop, 6 papers presentation
- August 2009, Towada Community Designation Ceremony, Japan
- October 2009, the 5th Asia Regional Safe Community Conference, China

3.10 The Centre reports on their safe community activities and research efforts.

The project leader, Dr. Lu Pai, works on teaching and research of public health for more than 25 years. The professional specialties include: motor vehicle injury prevention, child safety, home safety, burn prevention, injury surveillance system, and safe community program promotion. Her publications are as below:

2002

1. Lee LL, Pai L, Shen PT: Community Home Injury Prevention for Children under Five. *Journal of Taiwan Public Health Association*, 2002, 21(1), 61-72.
2. Pai L: Building up An Injury Surveillance System Based on Emergency Injury Registration, In 1st Asian Regional Conference on Safe Communities, Suwon, Korea, 2002, February, 25-27.
3. Lin CC, Pai L: Childhood Burns in Taiwan: An Epidemiological Study. In 1st Asian Regional Conference on Safe Communities, Suwon, Korea, 2002, February, 25-27.
4. Pai L, Jean WJ, Lin CC, Dong GY: Risk Factor for Mortality of Hospitalized Burned Patients in Taiwan. In 6th World Conference on Injury Prevention and Control, 2002, May 12-15.
5. Jean WJ, Pai L, Lin CC, Chen HC: The Epidemiology of Hospitalized Burn Injuries in Taiwan. In 1st Asian Regional Conference on Safe Communities, Suwon, Korea, 2002, February, 25-27.
6. Lo PS, Pai L, Wong YJ: Epidemiology of Injuries from Falls among Children in Taiwan. In 1st Asian Regional Conference on Safe Communities, Suwon, Korea, 2002, February, 25-27.
7. Pai L, Chien WC, Lin CC & Dong GY: Risk factors for mortality of hospitalized burned patients in Taiwan. In 6th World Conference on Injury Prevention and Control, Montreal, Canada, May 12-15, 2002.
8. Pai L, Lin CC, Chien WC & Chen HC: The epidemiology of hospitalized burn injuries in Taiwan. In 6th World Conference on Injury Prevention and Control, Montreal, Canada, May 12-15, 2002.
9. Pai L, Lo PS & Wong YJ: Epidemiology of injuries from falls among children in Taiwan. In 6th World Conference on Injury Prevention and Control, Montreal, Canada, May 12-15, 2002.
10. Pai L: The Injury Surveillance System on Children. 1st Conference on Children Injury Prevention. Taipei, Aug. 10, 2002.
11. Chang CH, Pai L: Assessment on the Series Effect of Two Burns Injury Database. Program Report, National Science Council, Executive Yuan, March 8, 2002.
12. Pai L, Chang LL: The Report on Safe Community Program Promotion in Taiwan—Phase I. Bureau of Health Promotion, Dept. of Health, Executive Yuan, Dec. 31, 2002.
13. Lo CH, Pai L, Wang YH, Chang LL, Cheng WL, Chien WC, Lo PS, Lin TC: The Urban Safe Community Program—Neihu Community as an Example. Bureau of Health Promotion, Dept. of Health, Executive Yuan, Dec. 31, 2002.

14. Pai L, Lin TC, Lo PS, Chien WC, Cheng WL, Wang YJ: The Establishment and Assessment on Registration of Injury Causes. Bureau of Health Promotion, Dept. of Health, Executive Yuan, Dec. 31, 2002.

2003

1. Lin MR, Chang SH, Huang W, Hwang HF & Pai, L: Factors associated with severity of motorcycle injuries among young adult riders. *Annals of Emergency Medicine*, 2003, 41(6), 783-791.
2. Chien WC, Pai L, Lin CC, & Chen HC: Epidemiology of hospitalized burn patients in Taiwan. *Burns: The Journal of the International Society for Burn Injuries*, 2003, 29: 582-588.
3. Chien WC, Pai L, Wang HJ, Chu CM & Tung KY : Factors Associated with Increased Risk of Death of Hospitalized Burn Patients in Taiwan. *The Journal of Plastic Surgical Association, R.O.C.*, 2003, 12(3)111-123.
4. Lin MR, Chang SH, Pai L & Keyl PM: A longitudinal study of risk factors for motorcycle crashes among junior college students in Taiwan. *Accident Analysis & Prevention*, 2003, 35: 243-252.
5. Lo PS, Pai L: The Primary Research on the Epidemiology of Children Traffic Injury. In 12th International Conference on Safe Communities, Hong Kong, March 17-21, 2003.
6. Pai L.: Household safety inspection and improvement for young children. In 12th International Conference on Safe Communities, Hong Kong, March 17-21, 2003.
7. Lin HM, Pai L: The Assessment on Home Safety Inspection—Comparing between Changhua County and Taichung County. In 2003 Taiwan Public Health Conference, Oct. 25-26, 2003.
8. Pai L, Chang LL: The Report on Safe Community Program Promotion in Taiwan—Phase II. Bureau of Health Promotion, Dept. of Health, Executive Yuan, Dec, 31, 2003.

2004

1. Pai L & Chien WC : Learning from Burn Registry Data --Hospitalized Burns in Taiwan. Keynote speech at the session of Safe Community Program: An Effective Approach to Injury. In 2nd Asian Regional Conference on Safe Communities, Dhaka, Bangladesh, Feb. 15-17, 2004.
2. Tseng TY, Huang SP & Pai L : Promotion of Playground Safety for Elementary School and Kindergarten. In 13th International Conference on Safe Communities, Prague, Czech Republic, June 2-4, 2004.
3. Pai L, Lin HY,& Lin CC: Suicides and Serious Suicide Attempts in Taiwan. In 7th World Conference on Injury Prevention and Safety Promotion, Vienna, Austria, June 6-9, 2004.
4. Wen YT & Pai L: A Study on The Causes of Injuries in Neihu District of Taiwan. In 7th World Conference on Injury Prevention and Safety Promotion, Vienna, Austria, June 6-9, 2004.
5. Lo PS & Pai L : A comparative study on risks between children and adults in the same motor vehicle accidents. In 7th World Conference on Injury Prevention and Safety Promotion, Vienna, Austria, June 6-9, 2004.

6. Pai L : Response to Mr. Yousif Rahim's State-of -Art Speech of "Safe Community in different settings". In 7th World Conference on Injury Prevention and Safety Promotion, Vienna, Austria, June 6-9, 2004.
7. Pai L, Lin TC, Lo PS, Wang YH: The Establishment of Injury Surveillance Network in Taiwan. Bureau of Health Promotion, Dept. of Health, Executive Yuan, June 17, 2004.
8. Chen HI, Pai L, Wen YT: The Urban Safe Community Program—Neihu Community as an Example. Bureau of Health Promotion, Dept. of Health, Executive Yuan, May 7, 2004.
9. Pai L, Chang LL: The Report on Safe Community Program Promotion in Taiwan—Phase III. Bureau of Health Promotion, Dept. of Health, Executive Yuan, Dec. 31, 2004.
10. Pai L, Lin TC, Lo PS, Wang YH: The Establishment of Injury Surveillance Network in Taiwan. Bureau of Health Promotion, Dept. of Health, Executive Yuan, Dec. 31, 2004.
11. Yan CY, Pai L, Wu HW, Shen HE: The Urban Safe Community Program—Neihu Community as an Example. Bureau of Health Promotion, Dept. of Health, Executive Yuan, Dec. 31, 2004.

2005

1. Pai L : Violence—Asia vs. the Rest of the World. In 14th International Conference on Safe Communities. Bergen, Norway, June 13-16, 2005.
2. Pai L : Safe Community – A Sustainable Approach to Implement Injury Prevention and Safety Promotion. In 37th APACPH Conference in Conjunction with 2005 Asia Pacific Health Forum, Taipei, Taiwan, November 19-23, 2005.
3. Pai L, Chang LL: The Report on Safe Community Program Promotion in Taiwan—Phase IV. Bureau of Health Promotion, Dept. of Health, Executive Yuan, Dec. 31, 2005.
4. Chang DM, Pai L, Wang YH, Wu HW, Shen HE: The Urban Safe Community Program—Neihu Community as an Example. Bureau of Health Promotion, Dept. of Health, Executive Yuan, Dec. 31, 2005.
5. Pai L, Lin TC: The Establishment of Injury Surveillance Network in Taiwan. Bureau of Health Promotion, Dept. of Health, Executive Yuan, Dec. 31, 2005.

2006

1. Lo PS, Pai L: The Comparison on risk factors between children and adults in the same car incident in Taiwan. *Journal of Transportation*, 2006 , 6 (1) : 79-90.
2. Pai L : Experiences of Translating Research into Practice in High to Low Income Communities, In 2nd International Seminar on Injury Research Methods, Cape Town, South Africa, April 6-7, 2006.
3. Pai L : The Infrastructure that Suits the Measure to Local Conditions. In 15th International Safe Communities Conference, Cape Town, South Africa, April 9-11, 2006.
4. Pai L: The Development of Injury Surveillance System in Taiwan. In 2006 Taiwan Public Health Conference, Taipei, Sep. 30 & Oct. 1, 2006.
5. Pai L :Safe Community Development in Taiwan, from the beginning to the future, In National Annual Conference on Safe Communities, Jeju, Korea, November 5-7, 2006.

6. Pai L, Chang LL: The Report on Taiwan Safe Community Network Promotion Program. Bureau of Health Promotion, Dept. of Health, Executive Yuan, Dec. 31, 2006.
7. Pai L, Lin MS, Cheng CM: The Report on Developing Innovation Service Platform for Industry of Children Related Products—Phase I. Ministry of Economic Affairs, Nov. 30, 2006.
8. Pai L, Cheng CM, Chung CH, Lin CP: The Evaluation Report on Home Safety Inspection in Households with Elderly and Children under Five. Bureau of Health, Taipei City Government, Dec. 18, 2006.

2007

1. Pai L : In Conference on Promotion of Safe Community in Kameoka City, Kameoka, Japan, March 16-19, 2007
2. Pai L : The role of local administration office in safe community development, In National Annual Conference on Safe Communities, Suwon, Korea, October 1-5, 2007.
3. Pai L : The connection between Safe Schools and Safe Communities, In 2007 National Conference on Safe Communities and Safe Schools in Taiwan, Taipei, Taiwan, November 17-18, 2007.
4. Chung CH & Pai L: Comparing the Safety Knowledge, Attitudes and Practice in Residents from a Safe Community, a Prospective Safe Community and a Control Community. In 2007 National Conference on Safe Communities and Safe Schools in Taiwan, Taipei, Taiwan, November 17-18, 2007.
5. Pai L : Safe Communities as National Policy. In 4th Asian Regional Conference on Safe Communities, Bangkok, Thailand, November 21-24, 2007.
6. Pai L, Hung YW, Wu CF: The Report on Developing Innovation Service Platform for Industry of Children Related Products—Phase I. Ministry of Economic Affairs, Nov. 30, 2007.
7. Pai L, Lee CC: The Report on Taiwan Safe Community Network Promotion Program. Bureau of Health Promotion, Dept. of Health, Executive Yuan, Dec. 31, 2007.

2008

1. Pai L : Making Injury Surveillance Suit Local Circumstances. In Asian Regional Safe Community Network Conference on Surveillance for Safety Promotion, Kameoka, Kyoto, Japan, March 1-2, 2008
2. Pai L : The roles of governments at different levels in safe community developmen. In 17th International Safe Communities Conference, Christchurch, New Zealand, October 20-23, 2008
3. Pai L : How a community safety promotion program being successful by thinking globally, planning nationally and acting locally—use Alishan Safe Community as an example. In 17th International Safe Communities Conference, Christchurch, New Zealand, October 20-23, 2008
4. Pai L: The Evaluation on Safe Community Program. In 16th Occupation Safety and Health Promotion Conference, Hong Kong, December 16-17, 2008.
5. Pai L, Lee CC: The Report on Taipei Safe Community Network Promotion Program. Bureau of Health Taipei City Government, Dec. 20, 2008.
6. Pai L, Lee CC: The Report on Taiwan Safe Community Network Promotion Program. Bureau of Health Promotion, Dept. of Health, Executive Yuan, Dec. 31, 2008.

2009

1. Pai L: Safe Communities and Injury Surveillance in Taiwan, In Seminar on Safe Communities, Atsugi City, Japan, February 12-14, 2009.
2. Pai L: Safe Schools. In pre-conference workshop on safe schools, Cali, Columbia, August 12, 2009.
3. Pai L: International Safe School Movement. In pre-conference workshop on safe schools, Cali, Columbia, August 12, 2009
4. Pai L: Examples of International Safe Schools. In pre-conference workshop on safe schools, Cali, Columbia, August 12, 2009
5. Pai L: Safe School Movement and Its Importance to build Safe Communities. In 18th International Conference on Safe Communities, Cali, Columbia, August 13-15, 2009
6. Pai L: Gradually Expanded Safe Community Movement—Taiwanese Experience. In the 3rd Annual Conference of the Japanese Society of Safety Promotion, Towada City, Japan, August 29, 2009.

Appendix

Safe Community Promotion: Implementation

Starting Phase

■
↓
Main Project

□
↓
Subsidiary Project

Selecting suitable communities (featured Places where people possess high volition and collaboration)

Primary consultative conference and an introduction to 6 Criteria for Safe Community

Investigating Community resource and organizing the core of safety promotion organization

Evaluating the integration of the resource and the establishment of organization of each community

Secondary consultative conference: Form of injury data collection and other document collection

Beginning to collect data

Setting up a website and providing related domestic and foreign

Inviting the Chair and the member of WHO Safe Community Organization for sharing experience

Determining the future prospective, emphasis, and items

Evaluating the work of each community and main focuses and supplying some suggestions

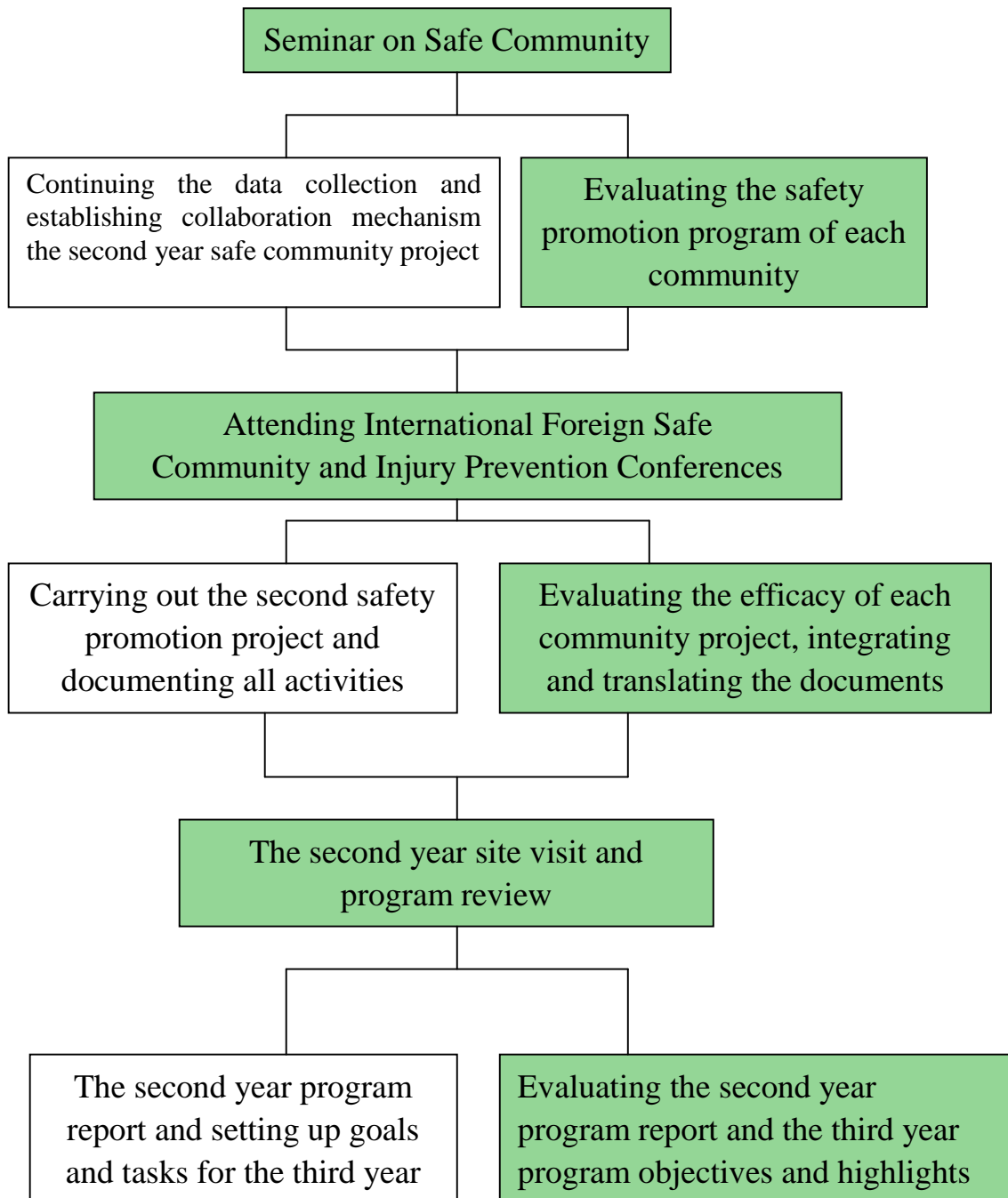
Developing Phase

Safe Community

Continuing data collection, designing the first year safety promotion program and establishing working group for each project

Evaluating the first year safety promotion program

Refined Phase



Accomplished Phase

