



Center for Community Safety Promotion

Affiliate Support Center and Certifying Center for Safe Community
Ajou University School of Medicine, Suwon, Korea



Xinyi Safe Community



Name of the Community: Xinyi Community, Taipei City

Country: Taiwan

Number of inhabitants: 227,770

Programme started year: 2008

Designation year: 2010

Full application available: <http://www.xshpa.org.tw/xysafecity/>

For further information contact:

Name: Mr. Yu-Wei Chang

Institution: Xinyi Community Safety and Health Promotion Association, Taipei City

Address: No.1, Ln. 158, Songren Rd., Xinyi Dist.,

Zip code: 110

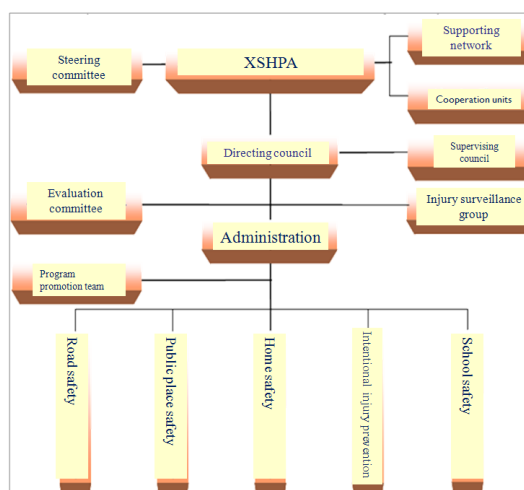
City: Taipei City Country: Taiwan

Phone (country code included): +886-2-87897316 Fax: +886-2-87897321

E-mail: deargod1026@gmail.com

Info address on www for the institution: <http://www.xshpa.org.tw/xysafecity/>

Xinyi Safe Community Program Promotion Organization Chart



■ Xinyi Safe Community program

Subject	Improvement	Target age group (Both genders)				
		0-4	5-14	15-24	25-64	65↑
Public area safety	Unused place reconstruction project	⊙	⊙	⊙	⊙	⊙
	Xinyi District Park, plaza environment safety assessment and improvement	⊙	⊙	⊙	⊙	⊙
	Environmental safety of the Xinyi business area	⊙	⊙	⊙	⊙	⊙
Intentional injury prevention	Domestic violence prevention, neighborhood watch promotion	⊙	⊙	⊙	⊙	⊙
	Suicide prevention	High risk cases				
Home safety	Fall prevention training for the elderly				⊙	⊙
	Xinyi Home Safety Experience Center	⊙	⊙	⊙	⊙	⊙
	Home safety evaluation training	⊙	⊙	⊙	⊙	⊙
School safety	School environment safety promotion project	⊙	⊙		⊙	
	Safe walk to school project		⊙	⊙	⊙	
	Development of international safe school program	⊙	⊙	⊙	⊙	
Traffic safety	Xinyi District bicycle lane safety promotion project		⊙	⊙	⊙	⊙
	Removing motorcycle out of arcades	⊙	⊙	⊙	⊙	⊙
	Dangerous intersection safety promotion	⊙	⊙	⊙	⊙	⊙
	Safety of MRT construction sites	⊙	⊙	⊙	⊙	⊙

■ Public Area environmental safety promotion projects

Public place reconstruction project--

Although there are many luxurious buildings in Xinyi district, but old apartments are the main residences there. Many unutilized space and illegal construction are hidden in neighborhood. We reconstructed unutilized and unsafe space in Tai-He and Hoi-An Boroughs as recreational areas and activity spaces for the local residents and children.



Reconstruct dangerous roads to divide vehicles, and pedestrians

Safety promotion of community parks and plaza--

United public and private sectors to monitor the safety of parks and plaza, and reported to public departments for improvement to provide safe park/plaza for residents.



Plaza safety evaluation process 2008



Private sector sponsors the safety maintenance and evaluation



Hold a regular meeting

Bicycle lane safety promotion project-

Evaluate Xinyi bicycle lane which is the first commuted bike lane located in business area in Taiwan and to establish a complete report-improvement process to maintain Xinyi bicycle lane safe.



Evaluate Xinyi bicycle lane and report to public departments for improvements

Dangerous intersection safety promotion project-

To reduce traffic injury, the police and volunteer traffic guard conducted traffic in dangerous intersection. Educate people with traffic safety concept.



Volunteer traffic guard conducted traffic in dangerous intersection



Popularize traffic safety concepts to residents

Removing motorcycles & scooters out of sidewalks--

With assistance of borough offices, we conduct and instruct motorcycle/scooter riders not parking on sidewalks/arcades and assist with follow-up maintenance processes to provide residents safe walking space.



before



after

Safety Checkups on MRT Construction Sites--

Set up Checkup System: conduct safety assessment and report to related public department for improvement to reduce injury.



before



after

■ **Program for high-risk groups**

Domestic Violence Prevention, Neighborhood Watch Promotion Program-

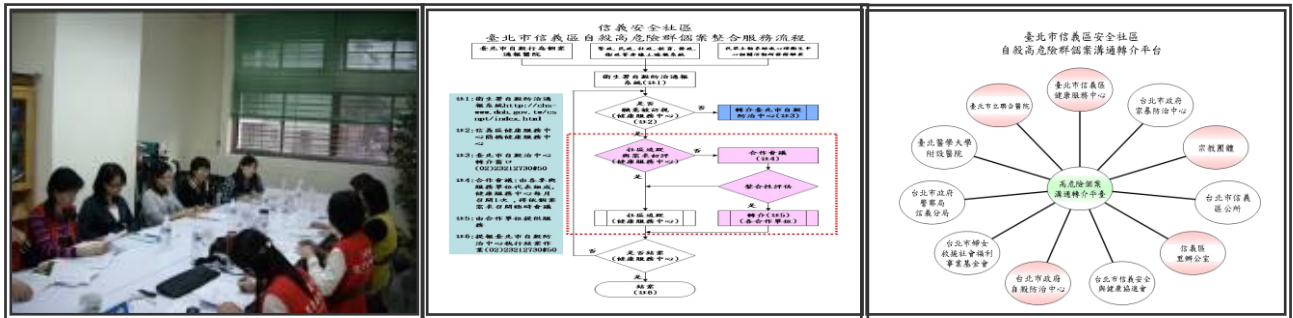
The number of reported cases in domestic violence is rising. By promoting Neighborhood Watch Project, arouse residents' safety consciousness while actively pinpointing and reporting issues like domestic violence and etc. to provide in-time and effective assistances and prevention services for victims of domestic violence.



Wu-Chan borough office formed a mobile office, and established report system to prevent domestic violence.

Suicide prevention project--

Xinyi District suicide rates had been higher than Taipei City, except 2007. United community resource to develop an information platform for the suicide cases, provide evaluations, supports and transfer service to high risk suicide cases.



Periodical meetings for the integration

Integrated service procedures for high risk

Suicide prevention service platform

■ **Program for all ages**

Senior fall prevention project--

According to professor Lu Pai's analysis (2005): the most often injury for seniors over 65 was fall injury. Through the combination of safety knowledge education and exercise training can enhance the elderly to avoid possible injury. We united borough offices and volunteers to prevent senior from fall injury.



Providing senior skills to prevent fall through the combination of health education and sports class.

Xinyi Home Safety Experience Center --

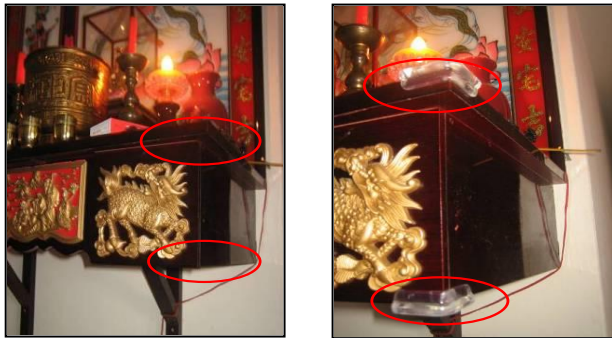
Uniting resources to establish Xinyi Home Safety Experience Center, and providing residents opportunities to learn through simulation. We also trained volunteers to provide guide for the visitors by different age groups.



Providing home safety guide and home safety DIY class

Home safety Evaluation Project--

Via the questionnaire to evaluate home environments and submit improvement suggestions to keep children and seniors from injury at home.



Improve unsafe environment through home safety evaluation

School environment safety promotion project--

Regularly evaluate environment in elementary schools and formulate specific improvement to promote safety.



Preventions for injuries

Safe Walk to School Project--

Xinyi District is a highly developed district, the surrounding roads of the 9 elementary schools are all busy streets. We united public and private sectors to build safe walking paths for students, and provide traffic safety knowledge to students to develop safe behavior.



Improve unsafe student walking paths

Develop International Safe School Program--

The safety concept must be deeply implanted into citizens, school is our channel, and student is our result. Assisting Taipei Medical University and Xinyi Elementary School to develop International Safe School program since 2009, expect to develop more safe schools.



Taipei Medical University(left) and Xinyi Elementary designated as an International Safe School

■ Injury Surveillance System

Unit in Charge: Taipei Medical University Hospital

Number of cases: Injury cases collected in 2008 were 556, and 2005 cases in 2009.

Population : 227,770

Initiation time : 2008

Data source : Hospital emergency room

■ International Participation

Date	Subjects	Results	Participants
2008.10.20-23	17 th International Safe Community Conference	Christchurch, New Zealand	Poster exhibition
2009.10.18-20	5 th Asia Regional Conference on Safe Communities	Beijing, China	Committee administration director-general, executive secretary, Traffic Safety Committee members
2010.3.23-26	19 th International Safe Community Conference	Suwon City, South Korea	Poster exhibition

■ Member

Number: 23 (part-time)

Association: Xinyi District Safety and Health Promotion Association, Taipei City

Public Health/ Health Promotion Partnership:

Xinyi District Health Center, Taipei Medical University Hospital, and Taipei City Hospital—Songde and Renai Branch

