

Introduction

Springfield, Missouri- Everywhere should be like this!

As our slogan boasts, "Everywhere Should Be Like This." Everything you need to live and work is here--a strong job market, great schools, superior health care, abundant outdoor & recreational opportunities, delightful entertainment, beautiful neighborhoods and a temperate climate with the best of all four seasons (Springfield 2007) .

Springfield has the nickname of "The Queen City of the Ozarks." It is also known as "The Cultural Center of the Ozarks." The area formerly known as North Springfield was once known as Moon City. Springfield is also known as "The Birthplace of Route 66," due to its early connection with the designation of U.S. Route 66!



Little residents of Springfield enjoy their day

Demographics

As of 2000, there were 151,580 people, 64,691 households, and 35,709 families residing in the city. The population density was 800.0/km² (2,072.0/mi²). There were 69,650 housing units at an average density of 367.6/km² (952.1/mi²). The racial makeup of the city was 91.69% White, 3.27% African American, 0.75% Native American, 1.36% Asian, 0.09% Pacific Islander, 0.88% from other races, and 1.95% from two or more races. Hispanic or Latino of any race were 2.31% of the population.

There were 64,691 households out of which 24.0% had children under the age of 18 living with them, 40.7% were married couples living together, 10.9% had a female householder with no husband present, and 44.8% were non-families. 35.3% of all households were made up of individuals and 11.6% had someone living alone who

was 65 years of age or older. The average household size was 2.17 and the average family size was 2.82.

In the city the population was spread out with 19.9% under the age of 18, 17.4% from 18 to 24, 28.0% from 25 to 44, 19.8% from 45 to 64, and 14.9% are 65 years of age or older. The median age is 34 years. For every 100 females there were 92.9 males. For every 100 females age 18 and over, there were 90.0 males.

The median income for a household in the city was \$29,563, and the median income for a family was \$38,114. Males had a median income of \$27,778 versus \$20,980 for females. The per capita income for the city was \$17,711. About 9.9% of families and 15.9% of the population were below the poverty line, including 19.1% of those under age 18 and 7.9% of those age 65 or over.

Education

High schools in Springfield include Central High School, and Hillcrest High School. Other public high schools in Springfield include Glendale High School and Parkview High School. Private schools include Springfield Sudbury School and Greenwood Laboratory School . There are several private, Christian schools in Springfield as well, including New Covenant Academy, Springfield Catholic High School, and Christian Schools of Springfield.

Colleges and universities located in Springfield include Missouri State University (until 2005 it was known as Southwest Missouri State University, or SMSU), Assemblies of God Theological Seminary, Baptist Bible College, Central Bible College, Drury University (known as Drury College until 2000) , Evangel University (until 2000 it was known as Evangel College, or EC), Forest Institute of Professional Psychology, Ozarks Technical Community College, St. John's College of Nursing and Health Sciences of Southwest Baptist University, Vatterott College, Everest College, Cox College (Nursing School), and Bryan College.

We list these schools and universities because we have safety outreach programs in many of these locations, and plan to expand our safety outreach to more students. Springfield is a college town, and college kids tend to have more than their share of injuries. Our Safe Communities coalition considers campus safety a priority.

Health Care partners in Springfield

Springfield's major health care organizations are one of the reasons that Springfield is able to become a Safe Communities partner. Two health care networks, St John's and Cox, serve the area, and are augmented by a strong Department of Health, and 8 hospitals. Safe Communities Springfield has representatives from both organizations on our board, and partners with both for traffic safety, child safety and other community safety initiatives.

Transportation

To understand our focus on traffic safety, it helps to understand Springfield's location as a traffic hub in the US. Springfield is served by Interstate 44 which connects the city with St. Louis and Tulsa, Oklahoma. U.S. Route 60, U.S. Route 65, and U.S. Route 160 pass through the city, and formerly U.S. Route 66 and U.S. Route 166 also passed through the city. Portions of the historic US 66 can still be seen in portions of the city. US 166's eastern terminus was once located in the northeast section of the city, and US 60 originally ended (westbound) in downtown Springfield. US 60 now goes through town on James River Freeway. Route 13 carries traffic north towards Kansas City.

Major streets include Glenstone Avenue, Sunshine Street, National Avenue, Kansas Expressway, Battlefield Road, Republic Road, West Bypass, Chestnut Expressway, and Kearney Street.

Springfield also has reliable public transportation operated by City Utilities that serves most areas inside the city limits in its fleet of biodiesel-fueled busses. (See map of Springfield on the following page.)

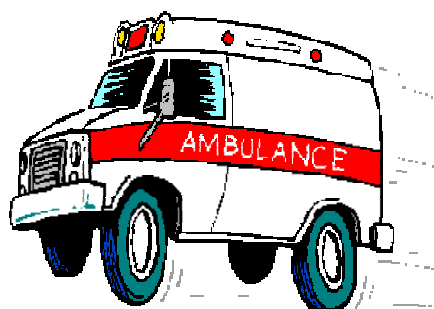


Travel Chart

- Stockholm, Sweden- 7000 plus miles, 22 hours by air
- Branson, MO - 35 miles, 0.6 hours
- Carthage, MO - 58 miles, 1.0 hour
- Chicago, IL - 515 miles, 8.6 hours
- Dallas, TX - 430 miles, 7.2 hours
- Des Moines, IA - 348 miles, 5.8 hours
- Eureka Springs, AR - 85 miles, 1.4 hours
- Ft. Leonard Wood, MO - 85 miles, 1.4 hours
- Hannibal, MO - 237 miles - 4 hours
- Harrison, AR - 87 miles, 1.5 hours
- Indianapolis, IN - 458 miles, 7.6 hours
- Jefferson City, MO - 133 miles, 2.2 hours
- Joplin, MO - 80 miles, 1.3 hours
- Kansas City, MO - 174 miles, 2.9 hours
- Lake of the Ozarks, MO - 80 miles, 1.3 hours
- Little Rock, AR - 234 miles, 3.9 hours
- Memphis, TN - 285 miles, 4.8 hours
- Minneapolis, MN - 602 miles, 10 hours
- Nashville, TN - 480 miles, 8 hours
- New Orleans, LA - 694 miles, 11.6 hours
- Oklahoma City, OK - 290 miles, 4.8 hours
- Omaha, NE - 385 miles, 6.4 hours
- Rolla, MO - 100 miles, 1.7 hours
- St. Louis, MO - 220 miles, 3.7 hours
- Topeka, KS - 230 miles, 3.8 hours
- Tulsa, OK - 185 miles, 3.1 hours
- Wichita, KS - 248 miles, 4.1 hours

Injury Profile

Injuries in Missouri



In 1999, 3550 Missourians died as a result of injuries, including unintentional and intentional injuries. Unintentional injuries are the fifth leading cause of death, suicide the tenth leading cause, and homicide the fifteenth leading cause of death among Missourians. In Missouri, more children and young adults, ages 1 to 35, die from unintentional injuries than from any other cause of death. Homicide is the second leading cause of

death for children and young adults, ages 5-25. During the twentieth century (1900's), trauma replaced infectious diseases as the most important threat to Missouri's children.

Although the number of deaths caused by injuries is staggering, the number of non-fatal injuries totalled almost 600,000 in 1999. Many Missourians who survive injuries experience long-term or permanent disabilities resulting in time lost from work and family, as well as costly medical and rehabilitation expenses, pain, and suffering.

Motor vehicle traffic is the number one cause of deaths among ages 1-34.

Falls are the leading cause of unintentional deaths among the 65+ age group. It is the second and third leading cause of unintentional deaths among the 55-64 and 45-54 age groups respectively.

Firearms play a significant role in homicides ages 10-44 and in suicides ages 10-64. Homicides appear as one of the ten leading causes of death as early as the <1 age group where it weighs in at number ten. It continues to rise as a leading cause through the 5-9 age group to the 15-24 age group where it is listed as the second leading cause of death.

Homicides remain as one of the ten leading causes of death through age 44.

Unintentional injuries alone account for over 30,000 hospitalizations and 530,000 emergency room visits annually.

Motor vehicle injuries are responsible for nearly 6,000 hospitalizations and 66,100 emergency room visits each year for all age groups.

Falls cause over 16,000 hospitalizations and nearly 139,000 emergency room visits.

Firearm related injuries account for over 650 hospitalizations and nearly 1,300 emergency room visits annually for all groups.

Seriousness of injury problems in Springfield

Our interest in addressing community safety promotion is based on the injury epidemiology of our community. Springfield is the largest city and health care hub for Greene County. A recent injury surveillance report from the State of Missouri Department of Health and Social Services demonstrated that injuries remain an important quality of life issue for our residents.

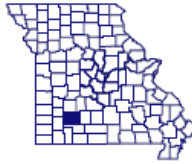
Overall, unintentional injuries cause the largest number of injuries to residents of Greene County. More than of our residents suffered from these injuries in 1997-1999. Leading causes of unintentional injuries include falls (about 70,000); struck by-struck against (about 20,000), motor vehicle injuries (about 11,000) and cut-piercing injuries (about 6,500) Cite.

Greene County residents suffer from intentional injuries, as well. More than 5,000 intentional injuries were reported during 1997-99. About 1,500 self-inflicted injuries were reported during the same period.

Overall, trends for intentional injuries are going down, but trends for intentional injuries are moving upward. Our community has organized around our Safe Communities group to address these injuries in an organized, and comprehensive fashion.

(See charts on following pages.)

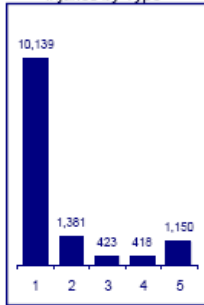
Greene County



Composite Rank

78

Analysis of Motor Vehicle Injuries by Type



1. Motor Vehicle
2. Bicyclist
3. Pedestrian
4. Motorcyclist
5. Other

| Indicator | Baseline | | Current | | State Rate | Percent Change | County Trend | County Rank |
|-------------------------|---------------|-----------------|---------------|-----------------|-----------------|----------------|--------------|-------------|
| | 1994-1996 | | 1997-1999 | | | | | |
| | Number | Rate | Number | Rate | 1999 | | | |
| Causes | | | | | | | | |
| Unintentional Injuries | 82,213 | 12,056.4 | 74,125 | 10,816.8 | 10,259.2 | -10.3% | ✓ | 79 |
| • Falls | 21,396 | 3,209.0 | 20,318 | 3,012.0 | 2,805.9 | -6.1% | | |
| • Struck By/Against | 12,527 | 1,840.9 | 10,724 | 1,571.6 | 1,626.3 | -14.6% | | |
| • Motor Vehicle | 14,123 | 2,004.2 | 13,511 | 1,909.8 | 1,623.4 | -4.7% | | |
| • Cut/Pierce | 9,168 | 1,328.7 | 6,712 | 973.5 | 1,088.0 | -26.7% | | |
| • Overexertion | 8,743 | 1,257.9 | 8,003 | 1,148.1 | 1,005.4 | -8.7% | | |
| Assault Injuries | 3,588 | 498.0 | 3,509 | 489.9 | 446.5 | -1.6% | ✓ | 93 |
| • Struck By/Against | 2,426 | 335.8 | 1,993 | 276.5 | 255.2 | -17.7% | | |
| • Cut/Pierce | 179 | 24.3 | 179 | 24.8 | 29.8 | 2.1% | | |
| • Firearms | 35 | 4.6 | 23 | 3.2 | 11.3 | -30.4% | | |
| • Spouse/Partner Abuse | 2 | - | 123 | 17.1 | 16.9 | - | | |
| • Sexual Abuse | 0 | - | 3 | - | 7.5 | - | | |
| • Physical/Other Abuse | 38 | 6.1 | 93 | 13.5 | 14.0 | 121.3% | | |
| • Rape by Non-Caretaker | 34 | 4.5 | 53 | 7.4 | 2.9 | 64.4% | | |
| Self Inflicted Injuries | 903 | 127.8 | 951 | 135.2 | 98.4 | 5.8% | X | 70 |
| • Poisoning | 706 | 100.4 | 787 | 112.4 | 79.5 | 12.0% | | |
| • Cut/Pierce | 147 | 20.4 | 122 | 16.7 | 11.2 | -18.1% | | |
| • Firearms | 17 | - | 15 | - | 2.0 | - | | |
| • Suffocate/Hand | 13 | - | 6 | - | 1.2 | - | | |
| Unknown | 456 | 66.8 | 491 | 71.0 | 181.4 | 6.3% | X | 35 |
| All Injuries | 87,160 | 12,749.1 | 79,076 | 11,512.9 | 10,985.5 | -9.7% | ✓ | 78 |

Injuries in Missouri: A Call to Action

Greene County

| Indicator | Under 15 | | 15-24 | | 25-44 | | 45-64 | | 65 and Over | | Total | |
|-------------------------|----------|-------|--------|--------|--------|--------|--------|-------|-------------|-------|--------|--------|
| | Female | Male | Female | Male | Female | Male | Female | Male | Female | Male | Female | Male |
| Unintentional Injuries | 6,487 | 8,811 | 7,275 | 9,568 | 10,917 | 13,891 | 4,918 | 4,805 | 5,113 | 2,528 | 34,715 | 39,410 |
| • Falls | 2,314 | 2,800 | 1,322 | 1,294 | 2,599 | 2,321 | 1,747 | 1,083 | 3,564 | 1,272 | 11,547 | 8,771 |
| • Struck By/Against | 1,031 | 1,891 | 892 | 1,992 | 1,365 | 2,182 | 445 | 569 | 214 | 142 | 3,947 | 6,777 |
| • Motor Vehicle | 320 | 668 | 83 | 312 | 157 | 352 | 64 | 95 | 21 | 28 | 645 | 1,455 |
| • Cut/Pierce | 436 | 762 | 529 | 1,221 | 753 | 1,714 | 311 | 614 | 136 | 233 | 2,167 | 4,545 |
| • Overexertion | 473 | 331 | 883 | 1,198 | 1,662 | 2,102 | 557 | 472 | 219 | 102 | 3,794 | 4,209 |
| Assault Injuries | 64 | 129 | 440 | 753 | 798 | 1,006 | 118 | 177 | 8 | 16 | 1,428 | 2,081 |
| • Struck By/Against | 26 | 80 | 221 | 505 | 369 | 623 | 46 | 113 | 3 | 7 | 665 | 1,328 |
| • Cut/Pierce | 1 | 3 | 12 | 50 | 19 | 75 | 5 | 11 | 1 | 2 | 38 | 141 |
| • Firearms | 0 | 0 | 1 | 6 | 2 | 11 | 1 | 0 | 1 | 1 | 5 | 18 |
| • Spouse/Partner Abuse | 0 | 0 | 37 | 3 | 71 | 1 | 11 | 0 | 0 | 0 | 119 | 4 |
| • Sexual Abuse | 1 | 2 | 0 | 0 | 0 | 0 | 0 | 0 | 0 | 0 | 1 | 2 |
| • Physical/Other Abuse | 10 | 21 | 19 | 8 | 31 | 1 | 1 | 0 | 2 | 0 | 63 | 30 |
| • Rape by Non-Caretaker | 7 | 0 | 20 | 1 | 22 | 1 | 2 | 0 | 0 | 0 | 51 | 2 |
| Self Inflicted Injuries | 27 | 13 | 143 | 110 | 261 | 251 | 65 | 59 | 15 | 7 | 511 | 440 |
| • Poisoning | 25 | 12 | 121 | 75 | 231 | 200 | 54 | 52 | 14 | 3 | 445 | 342 |
| • Cut/Pierce | 1 | 0 | 20 | 30 | 26 | 35 | 5 | 5 | 0 | 0 | 52 | 70 |
| • Firearms | 0 | 0 | 1 | 0 | 0 | 7 | 1 | 1 | 1 | 4 | 3 | 12 |
| • Suffocate/Hang | 1 | 0 | 0 | 1 | 0 | 1 | 2 | 1 | 0 | 0 | 3 | 3 |
| Unknown | 40 | 49 | 44 | 76 | 79 | 102 | 29 | 32 | 27 | 13 | 219 | 272 |
| All Injuries | 6,618 | 9,002 | 7,902 | 10,507 | 12,055 | 15,250 | 5,130 | 4,873 | 5,163 | 2,564 | 36,873 | 42,203 |

Additional information may be obtained by accessing the Department of Health and Senior Services website at www.dhss.state.mo.us.

Statement of intent

The Safe Communities coalition of Springfield, Missouri, is applying for membership in the International Safe Communities network, based on our work that meets the following six indicators:

An infrastructure based on partnership and collaborations, governed by a cross-sectional group that is responsible for safety promotion in their community;

Long-term, sustainable programs covering both genders and all ages, environments, and situations;

Programs that target high-risk groups and environments, and programs that promote safety for vulnerable groups;

Programs that document the frequency and causes of injuries;

Evaluation measures to assess their programs, processes and the effects of change; and,

Ongoing participation in national and international Safe Communities networks.

The rest of this report will document our activities in each indicator

1. An infrastructure based on partnership and collaborations, governed by a cross-sectional group that is responsible for safety promotion in their community

The lead group for Springfield Safe Communities is the Safety Council of the Ozarks.

The Safety Council of the Ozarks is a joint membership chapter of the National Safety Council serving most of Southern Missouri and Northwest Arkansas.

As a recognized Chapter of the National Safety Council, the Safety Council of the Ozarks is dedicated to understanding and interpreting best practices for achieving organizational processes, which are proactive in protecting human life, property and the environment.

As a chapter of the National Safety Council the Safety Council of the Ozarks has adopted the NSC Mission and Vision:

Mission: Educate and influence people to prevent accidental injury and death.

Vision: Making our world a safer place.

As a recognized Chapter of the National Safety Council, the Safety Council of the Ozarks is dedicated to improving the safety, health and environmental well being of all people.

As the nation's largest non-profit safety and health membership service organization, the Safety Council offers an unparalleled spectrum of resources to help communities build and support safety and health initiatives in all aspects of life – on the job, on the road and in the home and community.

Unintentional injuries are the fifth leading cause of death in this country and the leading cause of death for Americans under 45 years old. The Council believes that such incidents are not just random occurrences, but instead result from multiple conditions involving the interactions of machines and environments with people as they live, work, drive, and play. The Council views what some call “accidents” as unplanned, unwanted and nearly always preventable events.

- **Community Education Department:** Through our Community Education Department the Safety Council works to educate parents and children on various safety issues including safety belts and car seats, first aid and CPR. The Safety Council serves as the lead agency for Safe Kids Springfield.
- **Occupational Health & Safety Programs:** The Council provides organizations with services that make cost-effective solutions to safety and risk issues. We work with our clients to help them achieve the maximum benefit from their safety and risk management resources. An essential part of the Occupational Department's responsibility to the client is to provide safety education for employers and employees.

- Traffic Referral Services: The Traffic Referral Services Department is designed to be a resource to those who need to comply with a court order or a license restriction based on an incident involving either an alcohol or non-alcohol related traffic ticket.

The Safety Council of the Ozarks is a nonprofit, non-governmental organization dedicated to improving the safety, health and environmental well being of all people. The Council is a joint membership chapter of the National Safety Council serving Southern Missouri and Northwest Arkansas.

The Safety Council of the Ozarks and the National Safety Council are committed to protecting life and promoting health – both locally and nationally, in partnership with our Safe Communities network members.

STAFF

The Safety Council of the Ozarks has 8 full time employees providing support to the following departments:

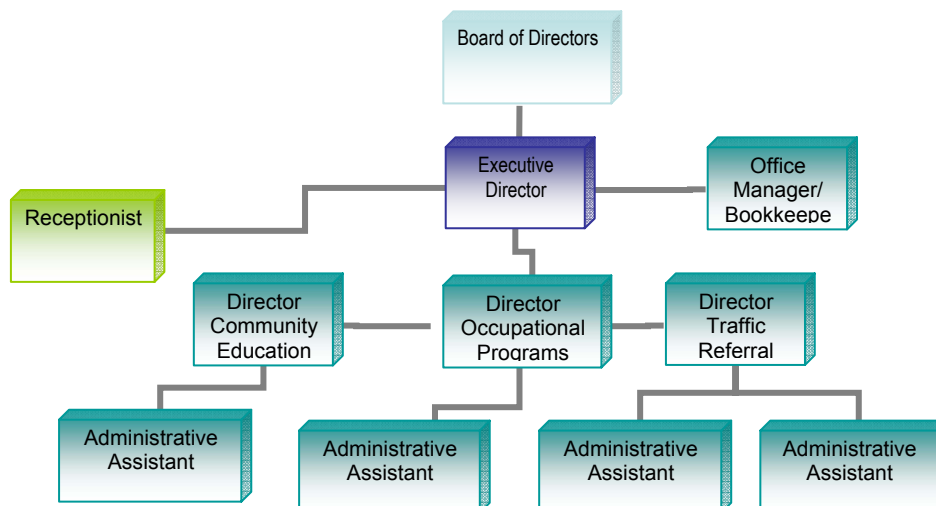
Administration – overall Council administration

Community Education – providing information and education programs to all ages through school presentations, special planned programs, distribution of materials and more.

Occupational Safety Training – providing training and consulting services to businesses.

Traffic Referral Services – working with area courts and participants by providing behavior modification programs to traffic offenders.

The Safety Council also utilizes the services of 43 contract instructors and counselors for the various programs.



Safe Communities Steering Committee (Reference Group)

Our Safe Communities Steering Committee members include:

Debora Biggs
Executive Director
Safety Council of the Ozarks

Chief Lynn Rowe
Springfield Police Department

Melissa Haddow
Executive Director
Community Partnership of the Ozarks

Brad Bodenhausen
Executive Vice President
Springfield Area Chamber of Commerce

Jim Brookhart
Vice President Human Resources
St. John's Health System

Allen Kunkel
Associate Vice President for Economic Development
Missouri State University

Bernard McCarthy, Ph.D.
Director, Community and Social Issues Institute
Missouri State University

Dr. Peggy Riggs
Associate Superintendent, Zone II
Springfield Public Schools

Our partners come from nongovernmental agencies, local businesses, health care organizations, local, regional and state governments, and private citizens.

2. Long-term, sustainable programs covering both genders and all ages, environments, and situations

Safe Communities Springfield works with both genders, all ages, and multiple injury environments and situations through the following programs:

Children, 0-14 years:

Babysitting Basics: Designed for ages 11- 14 who are interested in babysitting with a focus on child safety and first aid and age specific activities.

Basic Pellet Gun and Archery: Focuses on safety and the fundamentals, teaching beginners how to handle the pellet gun or arrow safely and properly.

Blueprint for Safer Roadways: Elementary school based traffic safety curriculum, and Buckle Up stencil for parking lot

Building Blocks (targets birth to 5 yrs): helps low-income, first-time mothers develop effective parenting skills and more resilient families.

Caring Communities (targets k-5th grades): programs focus on six core results (Parents Working, Children and Families Safe, Young Children Ready to Enter School, Children Succeeding in School, Children and Family Healthy, Youth Ready to Enter Productive Adulthood).

Car Seat (installation)/Seat Belt Safety Programs: Providing hands on education for the installation of child safety seats and education about the importance of wearing a safety belt.

Domestic Violence Prevention group for teen boys.

Drug Abuse Resistance Education (D.A.R.E.): An education program which seeks to discourage interest in illegal drugs, gangs and violence. This program targets 5th grade students.

Family and Friends CPR and First Aid for Children: American Heart Association course for those wishing to learn adult, child and infant CPR and information on first aid for children. This is not a certification course.

Families and Schools Together (FAST): unique multi-family group approach for the prevention of substance abuse, juvenile delinquency, school failure, abuse and neglect and mental health problems.

Fetal Alcohol Syndrome Project: Education program for area high schools teaching the affects on a baby's appearance from drinking while pregnant.

Girl Scouts Programs focusing on Cookie Sale Safety, Positive Power (relationship and dating safety programs), Together We Prepare (prepared in times of disaster), various safety badges.

Health Department: Numerous health and safety related programs including Violence Free Families, Emergency Response Planning (pandemic and bioterrorism).

Hunter Education (age 11 and up): focuses on safe usage of firearms, hunter ethics, woodsmanship and knowledge of all equipment.

Infant Safety Education and Awareness Programs.

McGruff School Safety Program: provides crime prevention safety education to children and people of all ages.

Parents as Teachers (targets birth to 5 yrs): An in-home education program that provides parents with child development knowledge and parenting support.

Safe Cribs: Assists families with cribs to provide a safe sleep environment for their infants.

Safe Kids Boot Camp: a summer education activity for 4th grade students teaching safety topics related to bicycles, seat belts, water, home, fire, etc.

Safe Schools/Healthy Students Initiative: promotes comprehensive, integrated, community-wide strategies with the goal of fostering school safety and health your development.

School Crossing Protection Committee: a group of community representatives responsible for school crossing protection, school traffic safety and safe construction of school sidewalks.

School Safety education programs for Home Safety, Pedestrian Safety, Bike Safety, Fire Prevention, Poison Prevention and Water Safety.

Shaken Baby Syndrome Prevention Programs and Community Awareness Seminars.

Summer Day Camps, After School Programs, Outdoor Initiatives and other youth activities providing a safe and secure environment for children.

Task Force on Gangs and Youth Violence: Works to prevent and reduce gangs and youth violence by facilitating partnerships between social services, educational institutions, juvenile and criminal justice systems and members of our community.

Walking School Bus: A pedestrian school bus that walks children to and from school.

Walk This Way Pedestrian Safety Program: An education program geared to elementary school students teaching pedestrian safety.

Wonder Years Title 1 Pre-Kindergarten Program (targets birth to 5 yrs): An academic preschool program that prepares children for kindergarten.

Youth, 15-24 years:

Adolescent Diversion Education Program: A 10-hour education program designed for those under the age of 21 convicted of certain drug and alcohol offenses.

Alcohol Responsibility and Awareness Panel: victim impact panel for DWI offenders.

Alive at 25: Interactive program for the high-risk driver between the ages of 16-24.

Behind the Wheel Driver's Education for high school driver's education classes.

Blueprint for Safer Roadways: Battle of the Belt, high school based safety belt awareness program, and Buckle Up stencil for parking lot.

Community and School CPR and AED Courses: teaching proper use of CPR and the use of an Automated External Defibrillator.

Defensive Driving Course: driving skills, habits, rules of the road, defensive driving techniques.

Defensive Driving Course-Attitudinal Dynamics of Driving: Emphasizes personal responsibility and control related to everyday driving habits of the aggressive driver and habitual speeder.

Domestic Violence Prevention group for teen boys.

Drinking and Driving Docu-Drama Programs for High Schools: A mock DWI crash staged at area high schools using students playing the roles of the crash victims and drunk driving with actual emergency personnel responding to the crash.

DWI education program for high school driver's education classes.

Family and Friends CPR and First Aid for Children: American Heart Association course for those wishing to learn adult, child and infant CPR and information on first aid for children. This is not a certification course.

Family Guide to Teen Driving Program: An education program for parents of new driver designed to assist families prepare for a safer teen driver.

Fetal Alcohol Syndrome Project: Education program for area high schools teaching the affects on a baby's appearance from drinking while pregnant.

Girl Scouts Programs focusing on Cookie Sale Safety, Positive Power (relationship and dating safety programs), Together We Prepare (prepared in times of disaster), various safety badges, babysitting safety.

Health Department: Numerous health and safety related programs including Violence Free Families, Emergency Response Planning (pandemic and bioterrorism).

Hunter Education (age 11 and up): focuses on safe usage of firearms, hunter ethics, woodsmanship and knowledge of all equipment.

Infant Safety & CPR Demonstration Classes: This video based program is offered as an area hospital for delivering parents. Parent skills are checked by an instructor.

Mental Illness education programs and support groups.

Minor Awareness Program: designed to address the problem of underage drinking.

Rape Awareness Program: educating the community about ways to prevent rape and reporting rape.

Responsibility and Awareness Panel: Victim impact panel for non-alcohol traffic offenders.

Risky Business (youth driving/safety/prevention program): Program designed for the young driver or those who will be driving soon. Includes talks from EMS, Air Care staff, ER staff, MADD, Highway Patrol and parents who have lost children to vehicular accidents.

Safe Cribs: Assists families with cribs to provide a safe sleep environment for their infants.

School Crossing Protection Committee: a group of community representatives responsible for school crossing protection, school traffic safety and safe construction of school sidewalks.

Shaken Baby Syndrome Prevention Programs and Community Awareness Seminars.

Shooting Sports Programs: provides safety education related to basic shotgun, skeet, trap and archery.

Substance Abuse Traffic Offenders Program: education and treatment services for individuals arrested for alcohol and drug related traffic offenses.

Summer Day Camps, After School Programs, Outdoor Initiatives and other youth activities providing a safe and secure environment for children.

Task Force on Gangs and Youth Violence: Targeting youth violence in Greene County, Missouri.

Underage Drinking Task Force: A task force of over 40 members representing all sectors that meet to analyze data and devise strategies to promote positive change through community education, intervention and environmental strategy initiatives.

Young Traffic Offenders Program: a court ordered educational program for young traffic offenders.

Targets 6th through 12th grades:

Drug prevention clubs--help students advocate for healthy choices, especially ones that avoid tobacco, alcohol and other drug use.

Guiding Good Choices--seeks to reduce the occurrence of substance abuse among teens by teaching parents effective family management and communication skills before their children enter adolescence.

Peer Mediation-- assist students by using a problem solving process that helps clarify the nature of the dispute and reach a solution satisfactory to all disputants.

School Based Clinicians-- work to prevent problems from becoming a crisis that can disrupt a school community.

Student Assistance Program-- provides confidential, non-judgmental early intervention for students with academic and/or behavior warning signs that are interfering with school achievement. Specific school interventions, possible substance abuse, assessment, or other social agency referrals may be offered as options to address the student behaviors.

Teen Parent Program-- provides services for pregnant and parenting teens.

Truancy Court-- designed to combat truancy and improve attendance, academics, and behavior of the students involved.

Safe Schools/Healthy Students Initiative – promotes comprehensive, integrated, community-wide strategies with the goal of fostering school safety and healthy youth development.

Substance Abuse Education and Treatment Programs.

Adults, 25-64 years:

Adult Drug Court and Family Drug Court: education and treatment services for adults and adults who have children who have been arrested for alcohol and drug-related traffic offenses.

Alcohol Responsibility and Awareness Panel: victim impact panel for DWI offenders.

AMA Physician Guidelines for Older Drivers – presentation to provide physicians and health care professionals with the tools they need to assess and counsel older patients on medical fitness-to-drive.

Anger Management education: developing awareness and methods to manage anger.

BabySense: This program is led by an experienced childbirth educator and offers valuable information on basic baby care and safety, including bathing, diapering, cord and circumcision care, feeding and comforting. Safety issues covered include babyproofing your home, car seat safety, sleep safety and selecting appropriate childcare.

Blueprint for Safer Roadways: Buckle Up stencil for parking lots.

CarFit – quick and comprehensive check for older drivers on how well they fit in their vehicle.

Crime Prevention Programs: educating the community on how to prevent crime.

Defensive Driving Course: driving skills, habits, rules of the road, defensive driving techniques.

Defensive Driving Course-Attitudinal Dynamics of Driving: Emphasizes personal responsibility and control related to everyday driving habits of the aggressive driver and habitual speeder.

DriveWell Toolkit – public information program for older driver safety and community mobility.

Education/information programs on safety issues related to Alzheimer’s patients.

Education/information programs on Home Safety, Seat Belt/Car Seat Safety.

Family Guide to Teen Driving Program: An education program for parents of new driver designed to assist families prepare for a safer teen driver.

Health Department: Numerous health and safety related programs including Violence Free Families, Emergency Response Planning (pandemic and bioterrorism).

Hunter Education: focuses on safe usage of firearms, hunter ethics, woodsmanship and knowledge of all equipment.

In Charge at Home: Self-Care Skills Family Workshop.

Infant Safety & CPR Demonstration Class: This video based program is offered as an area hospital for delivering parents. Parent skills are checked by an instructor.

Mental Illness education programs and support groups.

NHTSA Law Enforcement Module – law enforcement training module on how to work with older drivers.

Rape Awareness Program: educating the community about ways to prevent rape and reporting rape.

Responsibility and Awareness Panel: Victim impact panel for non-alcohol traffic offenders.

Roadwise Review – CD-ROM based program available at various locations for older drivers to check their driving abilities.

Safe Cribs: Assists families with cribs to provide a safe sleep environment for their infants.

Shaken Baby Syndrome Prevention Programs and Community Awareness Seminars.

Shooting Sports Programs: provides safety education related to basic shotgun, skeet, trap and archery.

Standard First Aid/CPR/AED Classes.

Substance Abuse Traffic Offenders Program: education and treatment services for individuals arrested for alcohol and drug related traffic offenses.

Substance Abuse Education and Treatment Programs: to reduce the use of alcohol and other drugs.

Traffic Advisory Board: citizen board serving in an advisory capacity and providing input on traffic issues, traffic safety and traffic regulation.

Elderly, 65+ years:

AARP Driver Safety Program: driver safety education program for older adults.

Adult Drug Court and Family Drug Court: education and treatment services for adults and adults who have children who have been arrested for alcohol and drug-related traffic offenses.

Alcohol Responsibility and Awareness Panel: victim impact panel for DWI offenders.

AMA Physician Guidelines for Older Drivers – presentation to provide physicians and health care professionals with the tools they need to assess and counsel older patients on medical fitness-to-drive.

Anger Management education: developing awareness and methods to manage anger.

BabySense: This program is led by an experienced childbirth educator and offers valuable information on basic baby care and safety, including bathing, diapering, cord and circumcision care, feeding and comforting. Safety issues covered include babyproofing your home, car seat safety, sleep safety and selecting appropriate childcare.

Basic Life Support for Healthcare Providers.

Blueprint for Safer Roadways: Buckle Up stencil for parking lots.

CarFit – quick and comprehensive check for older drivers on how well they fit in their vehicle.

Crime Prevention Programs: educating the community on how to prevent crime.

Defensive Driving Course: driving skills, habits, rules of the road, defensive driving techniques.

Defensive Driving Course-Attitudinal Dynamics of Driving: Emphasizes personal responsibility and control related to everyday driving habits of the aggressive driver and habitual speeder.

DriveWell Toolkit – public information program for older driver safety and community mobility.

Education/information programs on safety issues related to Alzheimer’s patients.

Fall Protection Education/Information Program: Related to elder falls.

Health Department: Numerous health and safety related programs including Violence Free Families, Emergency Response Planning (pandemic and bioterrorism).

Hunter Education: focuses on safe usage of firearms, hunter ethics, woodsmanship and knowledge of all equipment.

Infant Safety & CPR Demonstration Class: This video based program is offered as an area hospital for delivering parents. Parent skills are checked by an instructor.

Mental Illness education programs and support groups.

NHTSA Law Enforcement Module – law enforcement training module on how to work with older drivers.

Responsibility and Awareness Panel: Victim impact panel for non-alcohol traffic offenders.

Roadwise Review – CD-ROM based program available at various locations for older drivers to check their driving abilities.

Safe Cribs: Assists families with cribs to provide a safe sleep environment for their infants.

Shaken Baby Syndrome Prevention Programs and Community Awareness Seminars.

Shooting Sports Programs: provides safety education related to basic shotgun, skeet, trap and archery.

Standard First Aid/CPR/AED Classes.

Substance Abuse Traffic Offenders Program: education and treatment services for individuals arrested for alcohol and drug related traffic offenses.

Substance Abuse Education and Treatment Programs.

Traffic Advisory Board: citizen board serving in an advisory capacity and providing input on traffic issues, traffic safety and traffic regulation.

Safe Communities Springfield offers programs at the following environments

Home:

BabySense: This program is led by an experienced childbirth educator and offers valuable information on basic baby care and safety, including bathing, diapering, cord and circumcision care, feeding and comforting. Safety issues covered include babyproofing your home, car seat safety, sleep safety and selecting appropriate childcare.

Babysitting Basics: Designed for ages 11- 14 who are interested in babysitting with a focus on child safety and first aid and age specific activities.

Basic Life Support for Healthcare Providers.

Crime Prevention Programs: educating the community on how to prevent crime.

Education and information programs on methamphetamine awareness and domestic violence awareness.

Education/information programs on safety issues related to Alzheimer's patients.

Education/Information programs on home safety, fire prevention, and poison prevention.

Girl Scouts Programs focusing on Positive Power (relationship and dating safety programs), Together We Prepare (prepared in times of disaster), various safety badges, babysitting Safety, Staying Safe (self awareness and protection).

Health Department: Numerous health and safety related programs including Violence Free Families, Emergency Response Planning (pandemic and bioterrorism).

In Charge at Home: Self-Care Skills Family Workshop.

Neighborhood Watch Programs: a citizens's organization devoted to crime and vandalism prevention within a neighborhood.

Safe Cribs: Assists families with cribs to provide a safe sleep environment for their infants.

Shaken Baby Syndrome: A Community Awareness Seminar.

Standard and Pediatrics First Aid/CPR/AED classes.

Home Safety programs which include childproofing and identifying potential hazards, fire prevention and poison prevention.

Parents as Teachers: An in-home education program that provides parents with child development knowledge and parenting support.

Signed Bicycle Routes: designating bike lanes and roadways as shared-roadway bike routes.

Underage Drinking Task Force: A task force of over 40 members representing all sectors that meet to analyze data and devise strategies to promote positive change through community education, intervention and environmental strategy initiatives.

Walking Route Maps to School for safe walking routes.

Traffic:

AARP Driver Safety Program: driver safety education program for older adults.

Adolescent Diversion Education Program: A 10-hour education program designed for those under the age of 21 convicted of certain drug and alcohol offenses.

Adult Drug Court and Family Drug Court: education and treatment services for adults and adults who have children who have been arrested for alcohol and drug-related traffic offenses.

Alcohol Responsibility and Awareness Panel: victim impact panel for DWI offenders.

Alive at 25: Interactive program for the high-risk driver between the ages of 16-24.

AMA Physician Guidelines for Older Drivers – presentation to provide physicians and health care professionals with the tools they need to assess and counsel older patients on medical fitness-to-drive.

Behind the Wheel Drivers Education: providing hands on driver education.

Blueprint for Safer Roadways: Elementary school based traffic safety curriculum, Battle of the Belt, high school based safety belt awareness program, Buckle Up stencil for parking lots, law enforcement grants for education and enforcement, training session for bar owners/bartenders that addresses underage drinking and driving while intoxicated.

CarFit – quick and comprehensive check for older drivers on how well they fit in their vehicle.

Click-It-or-Ticket Seatbelt Program: Special law enforcement program targeting safety belt enforcement and education.

Defensive Driving Course: driving skills, habits, rules of the road, defensive driving techniques.

Defensive Driving Course-Attitudinal Dynamics of Driving: Emphasizes personal responsibility and control related to everyday driving habits of the aggressive driver and habitual speeder.

Drinking and Driving Docu-Drama Programs for High Schools: A mock DWI crash staged at area high schools using students playing the roles of the crash victims and drunk driving with actual emergency personnel responding to the crash..

Drive Friendly: educational campaign which targets aggressive driving.

Drive Responsibly Education Campaign: involves a series of safety education campaigns focusing on the four highest contributing circumstances to crashes in the community.

DriveWell Toolkit – public information program for older driver safety and community mobility.

Education and information programs on seat belt/car seat safety, pedestrian safety and bike safety.

Family Guide to Teen Driving Program: An education program for parents of new driver designed to assist families prepare for a safer teen driver.

NHTSA Law Enforcement Module – law enforcement training module on how to work with older drivers.

Photo Red Light Camera Enforcement: to be implemented in 2007.

Respect Red: educational campaign that targets red light running.

Responsibility and Awareness Panel: Victim impact panel for non-alcohol traffic offenders.

Risky Business (youth driving/safety/prevention program):): Program designed for the young driver or those who will be driving soon. Includes talks from EMS, Air Care staff, ER staff, MADD, Highway Patrol and parents who have lost children to vehicular accidents.

Roadwise Review – CD-ROM based program available at various locations for older drivers to check their driving abilities.

Substance Abuse Traffic Offenders Program: education and treatment services for individuals arrested for alcohol and drug related traffic offenses.

Transportation Management Center: centralized location to monitor and control 241 traffic signals within the area to improve and monitor safety.

Underage Drinking Task Force: A task force of over 40 members representing all sectors that meet to analyze data and devise strategies to promote positive change through community education, intervention and environmental strategy initiatives.

Young Traffic Offenders Program: a court ordered educational program for young traffic offenders.

Occupational:

Basic Life Support for Healthcare Providers.

Blueprint for Safer Roadways: Buckle Up stencil for parking lots, law enforcement grants for education and enforcement, training session for bar owners/bartenders that addresses underage drinking and driving while intoxicated.

Crime Prevention Programs: Focusing on crime prevention in the workplace.

Defensive Driving Programs: A program providing defensive driving education to businesses, with an emphasis on fleet safety.

Defensive Driving Programs for the Professional Truck Driver.

Health Department: Numerous health and safety related programs including Violence Free Families, Emergency Response Planning (pandemic and bioterrorism).

Mandatory reporting training.

Mental Illness education program: education on how to spot problems in the workplace.

Occupational Safety and Health training programs: Numerous programs targeting various occupational safety issues, e.g. personal protective equipment, lockout-tagout, and many more.

OSHAC – Occupational Safety and Health Advisory Council provides networking opportunities for employees involved in occupational safety.

Shaken Baby Syndrome: For the Health Professional.

Standard First Aid/CPR/AED Programs.

Workplace Violence Program: providing education to employees on how to identify workplace violence.

School:

Adult School Crossing Guards: to assist walking children across streets at specific high concentrated crosswalks.

Behind the Wheel Drivers Education: providing hands on driver education.

Blueprint for Safer Roadways: Elementary school based traffic safety curriculum, Battle of the Belt, high school based safety belt awareness program, Buckle Up stencil for parking lots.

Caring Communities: a coalition of area agencies working to promote strong families and communities where parents are health and working and where children are succeeding in school, growing up healthy and safe and prepared to enter productive adulthood.

Comprehensive School Safety Program and Protocol: developed and utilized by the Springfield Public School District.

Drug Abuse Resistance Education – DARE: An education program which seeks to discourage interest in illegal drugs, gangs and violence. This program targets 5th grade students.

Education and information programs on pedestrian and bike safety and other safety issues.

Heartsaver in Schools: AED education.

Health Department: Numerous health and safety related programs including Violence Free Families, Emergency Response Planning (pandemic and bioterrorism).

McGruff School Safety Program: provides crime prevention safety education to children and people of all ages.

Mental Illness education program: education on how to spot problems in the school.

Parents as Teachers: An in-home education program that provides parents with child development knowledge and parenting support.

Safe and Civil Schools: Trains leadership teams from participating schools to analyze their data, assess problem areas on campus, and develop school-wide action plans.

Safe Schools/Healthy Students Initiative – promotes comprehensive, integrated, community-wide strategies with the goal of fostering school safety and healthy youth development.

School Crossing Protection Committee: a group of community representatives responsible for school crossing protection, school traffic safety and safe construction of school sidewalks.

Special Pedestrian Signals at School Crosswalks: pedestrian countdown timers at traffic signals/school crosswalks to insure safe crossing of streets.

Speed Zone Advisory Boards: fixed speed radar boards in school speed zones to insure proper speeds in school zones.

Stop Bullying Now – school-based violence prevention program.

Task Force on Gangs and Youth Violence: Targeting youth violence in Greene County, Missouri.

Truancy awareness education program.

Underage Drinking Task Force: A task force of over 40 members representing all sectors that meet to analyze data and devise strategies to promote positive change through community education, intervention and environmental strategy initiatives.

Walking Route Maps to School for safe walking routes.

Walk This Way Pedestrian Safety Program: An education program geared to elementary school students teaching pedestrian safety.

Wonder Years Title 1 Pre-Kindergarten Program (targets birth to 5 yrs): An academic preschool program that prepares children for kindergarten.

Sports:

Community-wide trail system for safe walking and biking.

Education and information programs on dehydration.

GirlSports – program to learn the fundamentals and how to play safe.

Various education programs on hunting, fishing, canoeing and shooting sports.

Leisure:

Canoe Safety: providing education on how to handle a canoe safely.

Community-wide trail system for safe walking and biking.

Girl & Boy Scout Badgework.

Education and information programs on dehydration.

Staying Safe – self awareness and protection.

Various education programs on hunting, fishing, canoeing and shooting sports.

Other: What?

Crime Stoppers (anonymous phone tip line).

Internet Crime Prevention and Traffic Education tips of the Police Department website.

Disaster response planning and preparedness with our community partners, under the Springfield Bioterrorism-Emergency Response Team. Our recent ice storm was proof that our partnership is strong one. No fatalities occurred, and we were able to quickly respond to the people in most need.

Programs that target high-risk groups and environments, and programs that promote safety for vulnerable groups

Our injury surveillance indicates that interpersonal and self-inflicted violence is a problem that is growing in our community. We have developed many programs to target groups at risk for violence, and programs that promote safety for vulnerable groups, including children and families where violence is present.

Violence Prevention:

Anger Management education: developing awareness and methods to manage anger.

Carepartners – Take 5!: This support group is open to care partners of any age giving care to their senior family member. It includes special presentations on developing techniques on taking some stress out of care giving and maintaining a social life.

Child Advocacy Center: a center that provides a child-friendly setting in which to offer objective forensic interviews and sensitive medical exams in order to provide necessary evaluation for determining appropriate interventions.

Comprehensive School Safety Program and Protocol: utilized by the Springfield School District..

Counseling and assistance to homeless for referral to domestic violence shelters.

Domestic Violence Prevention group for teenage boys.

Family Enrichment Center and Harbor House provides a safe environment for families in need and men struggling with addictions.

Families And Schools Together (FAST); a unique multi-family group approach for the prevention of substance abuse, juvenile delinquency, school failure, abuse and neglect and mental health problems.

Health Department: Numerous health and safety related programs including Violence Free Families.

“Hit No More” classes & “Pathways to Change” teach anger management and improve social skills.

Infant Safety Education and Awareness Programs.

Neighborhood Watch Programs: a citizens’s organization devoted to crime and vandalism prevention within a neighborhood.

Nonviolent Crisis Intervention.

Parents as Teachers teen program works on stress management and referral resources to help reduce family violence.

Peer Mediation-- assist students by using a problem-solving process that helps clarify the nature of the dispute and reach a solution satisfactory to all disputants.

Positive Power – 4th grade and up; young girls learn about health friendships and what to do if they are bullied, learn healthy dating relationships, how to break the cycle of abuse and learn about the different types of abuse.

Rape Awareness Program: educating the community about ways to prevent rape and reporting rape.

Safe Cribs: Assists families with cribs to provide a safe sleep environment for their infants.

Safe and Civil Schools: to help educators create positive and proactive behaviour management techniques that are tailored to each classroom, school and district.

Safe and Drug-free Schools—Title IV.A: Dedicated to creating safe schools, responding to crises, drug abuse and violence prevention, ensuring the health and well being of students and promoting development of good character and citizenship. Safe Schools/Healthy Students Initiative – promotes comprehensive, integrated, community-wide strategies with the goal of fostering school safety and healthy youth development.

Shaken Baby Syndrome: A Community Awareness Program.

Shaken Baby Syndrome: For the Health Professional: Program for health care professionals to learn about SBS, what to look for and what types of people inflict this in children.

Staying Safe: an effective prevention program that enhances children’s feelings of self-esteem, assertiveness, problem solving and communication that will aid them in preventing abuse or recognizing the signs so they can report it.

Stop Bullying Now – school based violence prevention program.

Substance Abuse Education and Treatment Programs.

Task Force on Gangs and Youth Violence: Targeting youth violence in Greene County, Missouri.

Suicide Prevention:

Counseling and assistance programs available to the homeless for placement in a psychiatric unit.

HEARTS: weekly support group for women and their children living in public housing.

Mental Illness Education Programs on Suicide Prevention.

ROSS: assists public housing residents towards greater independence and self-determination.

Safe and Drug-free Schools—Title IV.A: Dedicated to creating safe schools, responding to crises, drug abuse and violence prevention, ensuring the health and well being of students and promoting development of good character and citizenship.

Substance Abuse Education and Treatment Programs.

Programs aiming at “High Risk-Groups”:

AARP Driver Safety Program for senior adults.

Alive at 25: interactive program for the high-risk driver between the ages of 16-24.

Car seat distribution program for low-income families.

Domestic Violence Prevention group for teenage boys.

Family Enrichment Center and Harbor House provides a safe environment for families in need and men struggling with addictions.

HEARTS: targets female residents who live in public housing with referrals from outside agencies.

Infant Safety Education and Awareness Programs to protect infants from harm.

Injury prevention and safety presentations targeting expectant Hispanic mothers.

Mental Illness Education Programs for youth in detention centers and support groups

Parents as Teachers: Safe Schools/Healthy Students grant; high school teen parents, and additional high-needs visits.

Rape Awareness Program: college students.

Risky Business for young drivers:): Program designed for the young driver or those who will be driving soon. Includes talks from EMS, Air Care staff, ER staff, MADD, Highway Patrol and parents who have lost children to vehicular accidents.

Safe Cribs for caregivers: Assists families with cribs to provide a safe sleep environment for their infants.

Task Force for Gangs and Youth Violence targeted to at-risk youth.

Together We Prepare: for disabled, young children, diverse languages, etc.

Underage Drinking Task Force: college and high school students.

Wonder Years Title 1 Pre-Kindergarten program: high-needs children and families that live within

Title 1 attendance areas, Caring Communities family education nights, and Big Brothers/Big Sisters tutoring program.

Programs that document the frequency and causes of injuries

We partner with the State of Missouri Department of Health and Senior Services (which tracks both intentional and unintentional injury/deaths), Missouri Department of Transportation Highway Safety Division, the Springfield-Greene County Health Department and the National Safety Council to monitor their injury surveillance systems. Injury statistics are available on a regular basis from these partners, and are used to drive and develop our programs. Hospitalization and emergency room visit reports are also utilized when determining programs needed in our community. Additional information is obtained from injury reports from our partners in health organizations, police and fire departments, rescue services and the local disaster response team. Other sources include the Annie E. Casey Foundation – Kids Count and the Occupational Safety and Health Administration data.

Missouri State University has a Community and Social Issues Institute which monitors data that affects Springfield and the surrounding area. The director for this program serves on the Safe Community Steering Committee and helps monitor and provide injury data for our area.

A report titled, “Community Focus: A Report for Springfield and Greene County” and commonly known as the Community Report Card is compiled periodically by the Community Foundation of the Ozarks (CFO) to identify our strengths and weaknesses in relation to various areas including: community health, early childhood, public order and safety, transportation and more. This report card, published in 2005 has been used to monitor injury statistics by numerous agencies. The CFO is in the process of updating the Community Report Card to evaluate our community’s success in changing or correcting our weaknesses and what new strengths and weaknesses need to be addressed.

Evaluation measures to assess their programs, processes and the effects of change

Our Safe Communities partners include academicians from Missouri State University. We have ongoing program evaluation underway, and are assisted in this effort through these partners, who help measure and interpret findings.

Missouri State University was founded in Springfield in 1905 as the Fourth District Normal School. During its early years, the institution's primary purpose was the preparation of teachers for the public school systems in the southwest region of Missouri. The first name change came in 1919 when the school became Southwest Missouri State Teachers College, reflecting its regional mission. By the mid-1940s, the University had expanded its instructional program beyond teacher education to include the liberal arts and sciences; and as a consequence, the Missouri legislature, in 1945, authorized an official change in the institution's name to Southwest Missouri State College.

By 1972, as additional programs were implemented at the undergraduate level, and with the development of graduate education, the University had become an educationally diverse institution. Recognition of this further growth and development again resulted in an official change in name to Southwest Missouri State University. In 1963, a residence center offering freshman and sophomore level courses was established at West Plains. Now, as a second campus of the university with its own mission, the West Plains campus offers a two-year general education program, which is fully integrated with programs on the main campus, as well as other specialty and skills courses.

In 2005, the University's name changed to Missouri State University. This final name change reflected the changing nature of the institution, as evidenced by increased enrolment, admissions standards, graduation rates, graduate programs and freshman success.



Of special note is the University's commitment to community partners, including Safe Communities Springfield. As part of its mission, the University states: Missouri State also supports the community through its statewide mission in public affairs. Community outreach programs through public affairs research centers, adult continuing education, distance learning courses, public broadcasting, and telecommunication linkages with other metropolitan universities utilize faculty expertise and skills to address state and community problems. It is with the public affairs research department that we liaise to conduct our evaluation tasks.

Ongoing participation in national and international Safe Communities networks

Our coalition is located in the middle of America, but many of our ties are international.

Safe Communities Springfield has conducted occupational training in Mexico, in partnership with Tyson Foods.

We have had onsite training with groups from Saudia Arabia and Germany.

Our Safe Communities Safe Kids International Representative, Daphne Greenlee, has participated and worked with members from around the world to promote child safety.

Our campus safety efforts target high-risk groups, including foreign students. Missouri State University has connections and joint agreements in the following communities in China: Beijing, Dalian, Kunming, Oingdao, Shenyang, Yinchuan, and Zhengzhau offering opportunities to expand our safety network internationally.

Our partners at the Universities and Chamber of Commerce work extensively with foreign exchange programs, and business development ventures. We are developing a targeted safety campaign for Missouri students who will spend a semester abroad. We are also developing a Safe Communities Springfield welcome package to be distributed to foreign visitors when they come to our city.

Springfield is a Sister City to Isesaki, Japan and Tlaquepaque, Mexico. We celebrate both relationships through our Sister Cities Association. Springfield takes its relationships with Sister Cities very seriously, and we plan to include visitors from both cities as honorary members of our Safe Communities network.



Springfield's Sister Cities activities include the annual Japanese Fall Festival. The celebration is a chance for citizens to see traditional Japanese dress, music,

ceremonies, and crafts. Arts Fiesta is an opportunity to learn more about the Hispanic culture through art, dress and music. Various opportunities are available to exchange information with our sister cities.

Because of our existing international ties, Safe Communities Springfield is anxious to extend our involvement in the national and international Safe Communities network

Finally, we plan to emphasize the international nature of our work in Safe Communities by inviting and recognizing representatives from International Safe Kids, the international communities at the universities, and our international business representatives from the Chamber of Commerce outreach program in our designation ceremony. We stand ready to host an international event, and hope that you will agree that a special Sister Cities Safe Communities summit with Isesaki or Tlaquepaque is a solid commitment from us to our international work. We look forward to this event, and to other international visits or conferences.

References

(City of Springfield 2007; Wikipedia 2007)

City of Springfield. (2007). "Introduction to Springfield." from <http://www.business4springfield.com/demographics/geography.htm>.
Wikipedia. (2007). "Springfield Missouri." from http://en.wikipedia.org/wiki/Springfield%2C_Missouri.